

# Amphenol

COMMUNICATIONS SOLUTIONS

## FitMate

- Wire to Board Connector Portfolio

## Presentation

 **FCi Basics**

## Industry recognized portfolio combining leading edge technologies and proven solutions

Wire to Board Core	Wire to Board eMobility	Input Output FFC FPC	Backplane	Board to Board
<p>BergStik® Minitek® PV® Dubox® Quickie®</p>	<p>MicroSpace™ MicroSpaceXS™ FlexLock™ MicroSpace™ High Voltage WireLock®</p>	<p>Clincher® SFW®-SFV USB HDMI Modular Jack Universal Contacts USB Cable Assembly</p>	<p>Metral® DIN41612 Millipacs® HPC</p>	<p>MezzoStak® BTFW MicroSpeed® Conan® BergStak®</p>

### Leading Product Portfolio For Strategic Markets

**Automotive**  
BMS, Lighting, OBC, ADAS

**Industrial**  
PLC/Controls, ESS, Metering

**IT/Datacom**  
Servers, Storage, AI, Embedded

**Consumer**  
Home Automation, Appliances

### Structured To Make Customers Succeed

**Value Add Solutions**  
Tailormade Cable Assemblies

**Custom Competence**  
Design Local; Build Regional

**Global Footprint**  
China; France; India; Mexico; Malaysia

**Technology & Innovation**  
Dedicated Basics Engineering Teams

# Agenda: FitMate - Wire to Board Connector Portfolio

- Value Proposition
- Features & Benefits
- Product Overview
- Product Specifications
- Markets & Application
- Marketing Tools

- Amphenol's FitMate is focus on fine pitch wire-to-board solution, offer various solution on different pitch, configurations and orientation.
- Now the family can support from 0.8mm to 1.5mm pitch, with position ranges from 2 to 50 pos, compatible with single row and double row.
- Active latch feature is available in 1.0mm / 1.25mm / 1.5mm range, support high retention force in vibration environment.
- It can offer crimping leads, or cable assembly solution based on customer request directly.
- Design is compatible with main competitor solution, best choice of equivalent or second source solution.

Features	Benefits
➤ Fine Pitch	❖ Saves space with reduced PCB footprint
➤ Low Profile Design	❖ Save PCB space
➤ UL94V-0 Flammability Rated Material	❖ High flammability rating
➤ RoHS Compliant & Lead-Free	❖ Meets health and safety requirements
➤ Active Latch System	❖ Ensure connecting in high shock environment
➤ Design Compatible	❖ Support equivalent or second source

# Product Overview – FitMate

R/A Header    VT Header    Receptacle    Terminal

Pitch	Configurations	Latch System	Base Number
0.8MM	Single Row	-	10154206 / 10156841 / 10159026 / 10154208

Pitch	Row	Latch System	Base Number
1.0MM	Single Row	-	10157375 / 10157376 / 10157377 / 10157378
1.0MM	Double Row	-	10164213 / 10164212 / 10164210 / 10164211
1.0MM	Single Row	Active Latch	10164366 / 10164365 / 10164367 / 10162622
1.0MM	Double Row	Active Latch	10157759 / 10157096 / 10157097 / 10157098

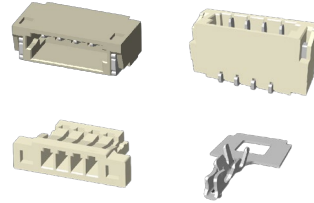
Pitch	Row	Latch System	Base Number
1.25MM	Single Row	-	10114830 / 10114828 / 10114826 / 10114827
1.25MM	Single Row	Active Latch	10155242 / 10155243 / 10155244 / 10155245
1.25MM	Double Row	Active Latch	10169363 / 10169364 / 10169365 / 10169366

Pitch	Row	Latch System	Base Number
1.50MM	Single Row	Active Latch	10155053 / 10155054 / 10155056 / 10166892
1.50MM	Double Row	Active Latch	10167624 / 10166584 / 10166893 / 10166892

# Product Specifications FitMate 0.80mm

## Basic Specifications

Configurations	Single Row
Latch System	-
PCB Termination	SMT
Conn Direction	Right Angle / Vertical
Pin Count	2-16p
Plating Option	Tin / Gold Flash Plating



## Materials

Header	
Housing	LCP
Contact	COPPER ALLOY
Receptacle	PA46
Terminal	PHOSPHOR BRONZE

## Electrical Performance

Current Rating	0.5A
Voltage Rating	30V
Contact Resistance	20 milliohm Max
Insulation Resistance	100 Megohm Min

## Mechanical Performance

Mating / Unmating Force	Refer Product Spec: GS-12-1546
Terminal / Housing Retention Force	3.43N Min
Latch Retention Force	-
Durability	30 cycles

## Environmental

Operating Temperature Range	-25 ~ +85°C
-----------------------------	-------------

## Recommend Part

10154206-04021LF	FitMate 0.8, header, right angle, SMT, gold flash plating, 4pos
10154206-08021LF	FitMate 0.8, header, right angle, SMT, gold flash plating, 8pos
10154206-12021LF	FitMate 0.8, header, right angle, SMT, gold flash plating, 12pos
10156841-04021LF	FitMate 0.8, header, vertical, SMT, gold flash plating, 4pos
10156841-08021LF	FitMate 0.8, header, vertical, SMT, gold flash plating, 8pos
10156841-12021LF	FitMate 0.8, header, vertical, SMT, gold flash plating, 12pos
10159026-1004LF	FitMate 0.8, receptacle, 4pos
10159026-1008LF	FitMate 0.8, receptacle, 8pos
10159026-1012LF	FitMate 0.8, receptacle, 12pos
10154208-20LF	FitMate 0.8, terminal, gold flash plating, 30-32AWG



## Consumer

- **Smart Home**
- **Health Care**
- **Portable Equipment**



- Robot vacuum cleaner
- Smart video doorbell
- Automatic cooking machine



- Inhaler machine
- Blood glucose monitor
- High blood pressure testing



- Portable tig welding machine
- Outdoor survival camping equivalent
- Portable energy storage device



- Samples available (check with sample room Tatabanya : [samples.global@amphenol-eu.com](mailto:samples.global@amphenol-eu.com))
- Website quick link: Landing Page
- Available on website
  - Drawings
  - 3D Models
  - Datasheet
  - Product specifications
  - Product presentation

If you have any enquires, please contact to us:

PM Contact: [gino.liu@amphenol-fci.com](mailto:gino.liu@amphenol-fci.com)

PLM Contact: [francois.pillet@amphenol-icc.com](mailto:francois.pillet@amphenol-icc.com)

# Thank You

**Amphenol**  
COMMUNICATIONS SOLUTIONS

 **FCi Basics**