

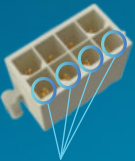
# Minitek® Pwr Connector System

The complete solution for wire-to-wire and wire-to-board needs

## Durability



**Design Feature for Low Mating Force**  
Flexing Beam Design enables for Low Insertion Force during Mating



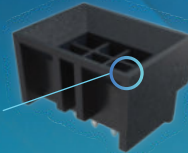
**Fully Polarized Mating Interface**



**Scoop Proof Assembly**  
Scoop proof contacts protect contacts from being damaged during mating/unmating

## Fuss-free mateability

**Feature on Housing for Blind-mating applications**



**BMI- Blind Mate Interface**

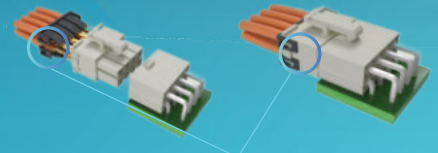
BMI provides a self-aligning feature molded into housings

Offers full range of options for every application and orientation

## Reliable connection



**Positive locking system** ensures the connectors are securely mated and prevents accidental un-mating



**TPA (Terminal Position Assurance) WTB Version**

## Product Family

<b>Pitch</b>	
<b>Poles &amp; Rows</b>	Dual Single
<b>Max Rating</b>	Amp Voltage
<b>Operating Temperature</b>	
<b>Wire Gauge (AWG)</b>	
<b>Housing material</b>	
<b>Header Configurations</b>	
<b>Header Terminations</b>	
<b>Application</b>	

Applications

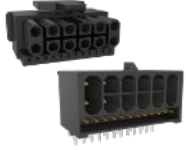


	 Minitek® Pwr 3.0	 Minitek® Pwr 4.2	 Minitek® Pwr 5.7
<b>Pitch</b>	3.00mm	4.20mm	5.70mm
<b>Poles &amp; Rows</b>	Dual: 2 - 24 Pos Single: 2 - 12 Pos	Dual: 2 - 24 Pos Single: 3 - 5 Pos	Dual: 2 - 12 Pos Single: -
<b>Max Rating</b>	Amp: 12 Voltage: 600 V	Amp: 13 Voltage: 600 V	Amp: 28 Voltage: 600 V
<b>Operating Temperature</b>	-40°C to 105°C	-40°C to 105°C	-40°C to 120°C
<b>Wire Gauge (AWG)</b>	16 - 30	16 - 28	12-16
<b>Housing material</b>	LCP and Nylon	LCP and Nylon	LCP and Nylon
<b>Header Configurations</b>	Vertical & R/A	Vertical & R/A	Vertical & R/A
<b>Header Terminations</b>	TH, SMT & Pressfit	TH	TH
<b>Application</b>	WTW & WTB	WTW & WTB	WTB
<b>Applications</b>	Automotive lightings	Display Systems/Automotive lightings	-
	HMI, PLC, HVAC	Display Systems, Electrical Lighting, PSU	HVAC, Lighting, Vending Machine
	1U Rackbox, WiMax Box	Router	-
	Rack Mount Servers, Blade Servers, Desktop PCs	FAN, Rack Mount/Servers, PSU, GPU	Server (OCP), PDB in servers
	Smart Appliances	Security Cameras	Garage Door Openers
	Defibrillators, Patient Monitors, Ultrasound equipment's	Hospital Beds	-



## Minitek® Pwr CEM-5 PCIe® Connector System

CEM5	HEADERS					RECEPTACLE HOUSINGS		TERMINALS		
	Right Angle TH	Right angle with Round Peg	Right angle Top mount with metal Harpoon	Standard Vertical	Vertical Covered dark Black	Standard Option1	Standard Option2	Standard Pwr terminal	Low mating force terminal	Signal
PCIe CEM5 Hybrid	10160920	10163894	10164279	10161122	10166200	10161719	10168565	10132447	10166702	10161952



## PICPWR OCP Connector System

OCP	HEADERS					RECEPTACLE HOUSINGS		TERMINALS	
	Mpic OCP R/A12+12	Mpic OCP Vertical 12+12	Mpic OCP vertical 6+6	Mpic OCP R/A 6+6	Mpic OCP vertical 12+12(18.2mm)	Mpic OCP Rec 12+12	Mpic OCP Rec 6+6	Power	Signal
PICPWR Hybrid	10167519-1212	10167520-1212	10167520-0606	10167519-0606	10172176	10167523-1212LF	10167523-0606LF	10167522	10167521



## Minitek® Pwr 5.7 Current rating up to 28A

PN	Configuration	Row	Positions	Plating
10142708	Vertical Through Hole Header	Dual	2-12	Tin 15µ"Gold 30µ"Gold
10146997	Right Angle Through Hole Header	Dual	2-12	Tin 15µ"Gold 30µ"Gold

PN	Configuration	Row	Positions	Plating
10158070	Female Terminal	NA	NA	Tin 15µ"Gold 30µ"Gold Gold Flash
10158453	Receptacle Housing (94 V-0)	Dual	2-12	NA
10142707	Receptacle Housing (94 V-2)	Dual	2-12	NA



## Minitek® Pwr 3.0 Wide range with Current Rating up to 12A

Rows and Poles	Headers								Plug		Receptade				
	Right Angle TH	Vertical TH	R/A SMT Tails & Hold Down	R/A SMT Tails & DIP Hold Down	Vertical SMT Tails & Hold Down	Vertical SMT Tails & DIP Hold Down	Vertical TH BMI	Right Angle TH BMI	VTH Metal Harpoon	Housing	Terminals	Housing	Terminals		
Minitek® Power 3.0 Standard	Dual Row (2-24)	10127720	10127721	10137924	10137924	10137926	10137927	10138980	10144754			10127717 10160855 (BMI)	10127719 10161703	10127716 10159684 (BMI)	10127718 10134160
	Single Row (2-12)	10136654	10136656 10157052	10136655	10136655						10158340		10127719 10161703	10136653	10134160 10127718
Minitek® Power 3.0 HCC	Dual Row (2-24)	10132449	10132450	10152198	10152198		10148439					10132446	10132448 10161703	10132445	10134160 10132447
	Single Row (2-12)	10142730										10160965	10132448 10161703	10142744	10134160 10132447

10151857 - Right Angle Through Hole Header with Metallic Board Lock (Single Row)

10137867 - Right Angle SMT Tails and DIP Board Lock Header (Single Row)

10162511\*\* - Vertical SMT Header with Solder Tab (Single Row)

10159410 - Vertical SMT Header (Single Row)

10161838 - Right Angle Through Hole Header with Metallic Board Lock (Dual Row)

10159685\*\* - Vertical Press Fit Header (Dual Row)



## Minitek® Pwr 4.2 Supports unique TPA solution, PCIe ATX Series and BMI Headers

ROWS AND POLES		CABLE SIDE											
		Headers				Plug		Receptacle			TPA Housing		
		Right Angle TH Header	Vertical TH Header	BMI VT Header	BMI R/A Header	Housing	Terminals	Vertical HSG	Right Angle HSG	Terminals	TPA Plug	TPA Receptacle	TPA Aligner
Minitek® Pwr 4.2 Standard	Dual Row (2-24)	10127819	10127820	10138978	10154358*	10127816 10144559	10156852 10127818	10127815	10122956	10134170 10127817			10153466
	Single Row (3-5)	10136646	10136647			10136645	10156852 10127818	10136644		10134170 10127817			10153467
Minitek® Pwr 4.2 HCC	Dual Row (2-24)	10131318	10131319			10127816	10156852 10136290	10127815	10122956	10134170 10130517 10136289			
	Single Row (3-5)	10137784	10137785			10136645	10156852 10136290	10136644					

\* Need Tooling Investment

PCIe ATX			
Right Angle Header	Vertical Header	Receptacle Housing	Receptacle Terminal
10147579	10147580	10147577	10134170

Learn more at [www.amphenol-cs.com/minitek-pwr](http://www.amphenol-cs.com/minitek-pwr)



/AmphenolCS



/Amphenol-CS



/AmphenolCS



/AmphenolCS

