

Cool Express Link™ EDSFF E3 1C & 2C PCIe® Gen 5/6 Orthogonal Cable Connectors

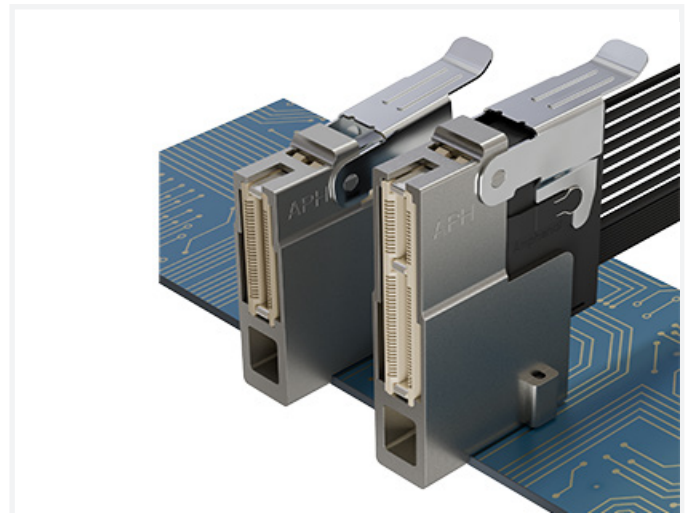
EDSFF E3 1C & 2C HYBRID ORTHOGONAL PRESS-FIT PCIe® GEN 5/6 CABLE CONNECTORS

The Amphenol Cool Express Link™ is a range of EDSFF E3 Hybrid Orthogonal Press-fit PCIe® Gen 5/6 Cable Connectors that supports low latency, high bandwidth, and high throughput data transmission for existing and next-gen storage and CXL 3.1 applications. Engineered for use in high-performance computing applications in artificial intelligence and machine learning that require advanced enterprise storage and a coherent memory-sharing environment, the die-cast cage design is robust and orthogonal, providing durability and stability. The hybrid connector design streamlines midplane design, enabling efficient transmission of high-speed signals to the host side. The user-friendly locking and latching design further enhances usability. Moreover, this system can be expanded to E3 4C to accommodate future applications.

- Robust and orthogonal die-cast cage design
- Hybrid connector design simplifies midplane design
- Hybrid connector design overpass high speed directly to the host side
- Easy locking and latching design
- Expandable to E3 4C for future applications

FEATURES

- Robust and orthogonal die-cast cage
- Hybrid design routes power and sideband to midplane
- Hybrid design overpass high-speed signal to host side
- Simple locking and latching feature
- E3 1C & 2C design is used in current applications
- Orthogonal high-density design
- Separate connector and cable assembly design
- Press-fit connector design



TARGET MARKETS/APPLICATIONS



Artificial Intelligence and Machine Learning (AI/ML)
High Performance Computing (HPC)

BENEFITS

- Requires no external bracket to support the connector
- Simplifies midplane architecture and reduces costs
- Meets low latency and low loss requirements for AI/ML and HPC
- Easy for the operator to plug and unplug the cable
- Tooling can be expanded to E3 4C for future application
- Able to support a group of drives/devices in the front panel
- Lower maintenance cost
- No SMT component height limitation

PART NUMBERS

| Description | Part Numbers |
|---|-----------------|
| Mini CE Orthogonal Hybrid Press-fit E3 2C Connector | MET008402413011 |
| Mini CE Orthogonal Hybrid Press-fit E3 1C Connector | MET005602413011 |

Find part number details using the search box on www.amphenol-cs.com