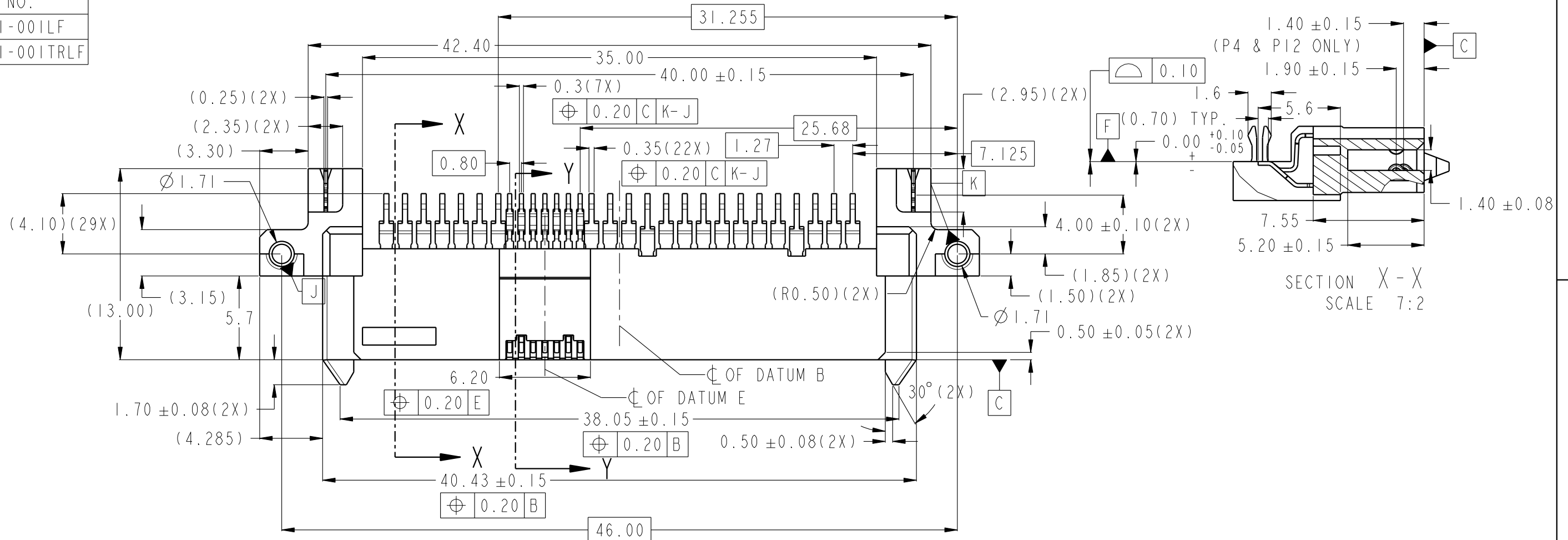
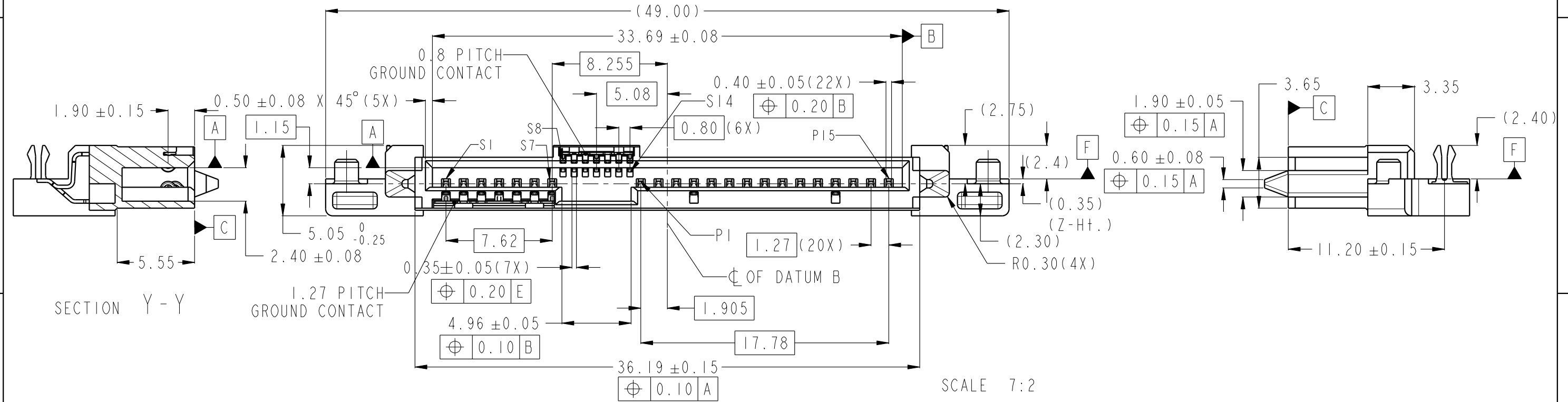


PRODUCT NO.  
10123371-001LF  
10123371-001TRLF



SECTION X-X  
SCALE 7:2



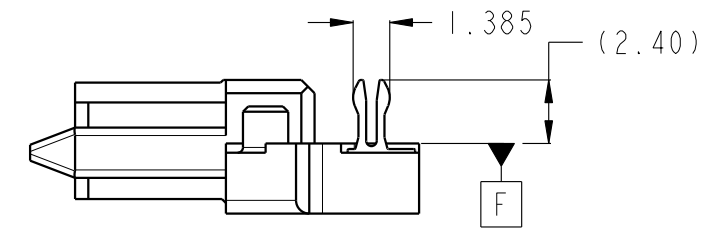
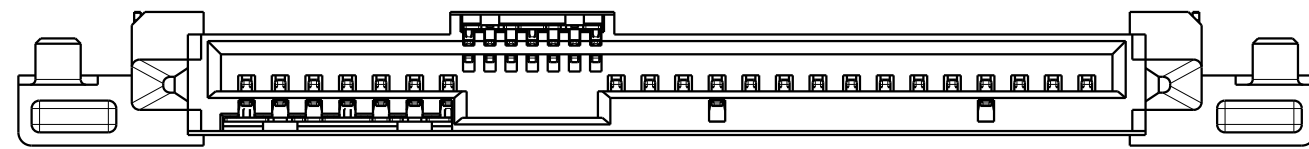
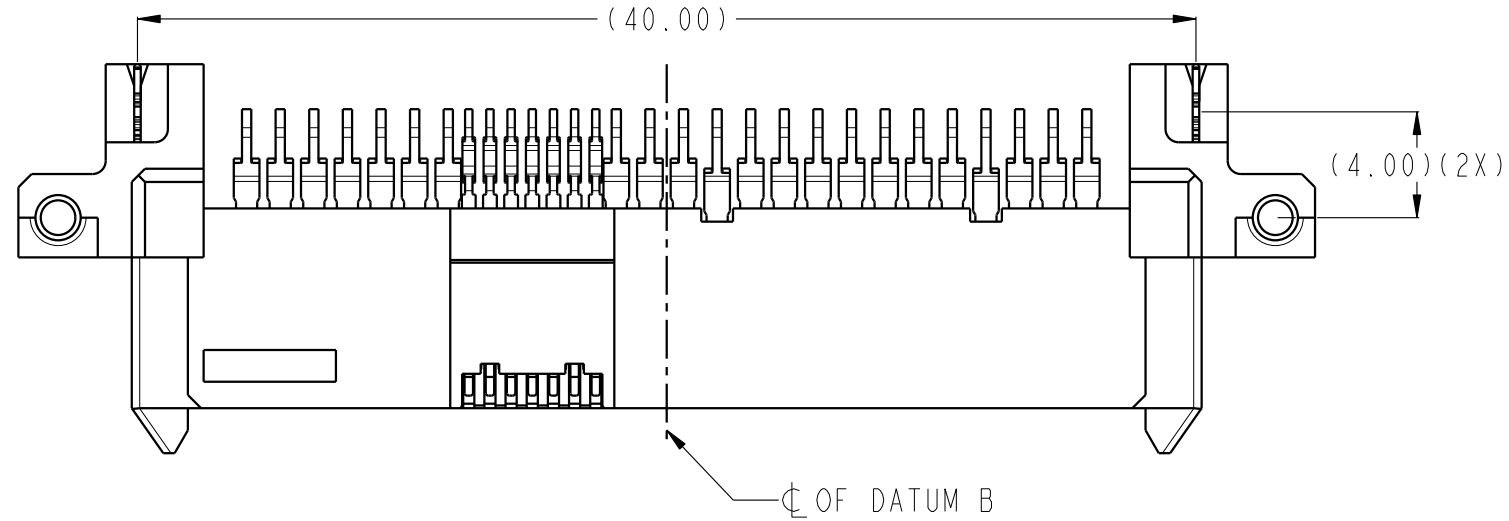
SECTION Y-Y

SCALE 7:2

spec ref	-	dr	Jeffrey Lim	2014/12/17	projection	MM	size	A3	scale	7:2							
tolerance std	TOLERANCES UNLESS OTHERWISE SPECIFIED	eng	Jeffrey Lim	2021/08/04			ecn no	ELX-S-41907-1	rel level	Released							
surface	<table border="1"> <tr> <td>linear</td> <td>0.X</td> <td>±</td> </tr> <tr> <td></td> <td>0.XX</td> <td>±0.20</td> </tr> <tr> <td></td> <td>0.XXX</td> <td>±</td> </tr> <tr> <td>angular</td> <td>0°</td> <td>±2°</td> </tr> </table>	linear	0.X	±				0.XX		±0.20		0.XXX	±	angular	0°	±2°	chr
linear	0.X	±															
	0.XX	±0.20															
	0.XXX	±															
angular	0°	±2°															
		appr	Koon-Poh Tay	2021/08/10			title 12G SAS RECEPTACLE R/A ASSY, Z-HT. 0.35		rev D								
		amphenol-icc.com			cat. no.		Product - Customer Drw		sheet 1 of 4								

Amphenol FCI  
© 2016 AFCI

PRODUCT NO.  
10123371-002LF  
10123371-002TRLF



SCALE 7:2

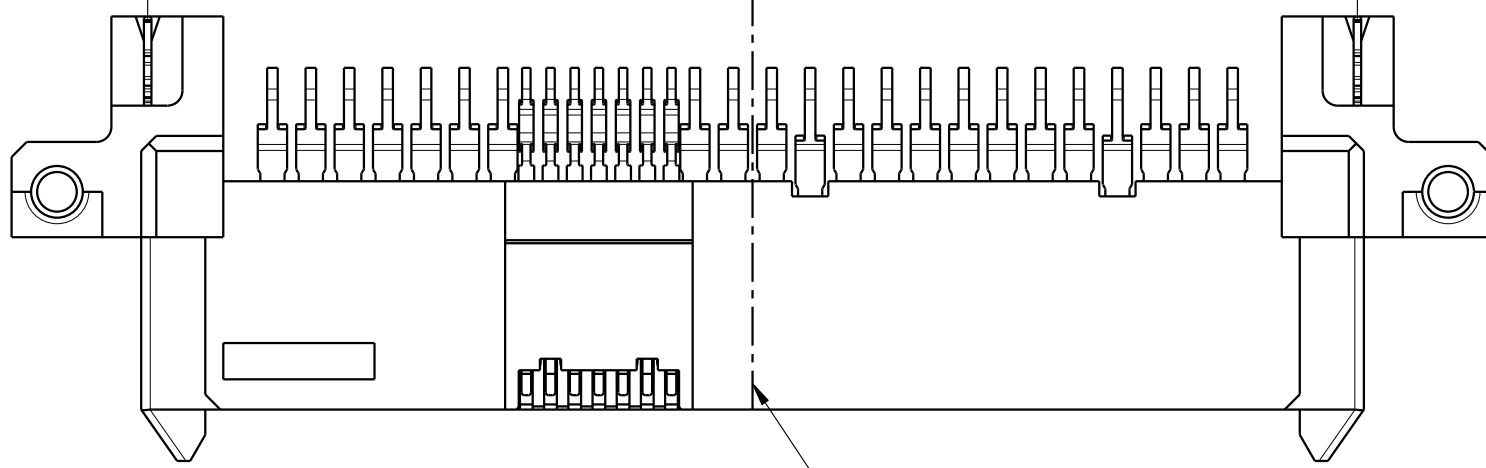
FOR MORE DIMENSIONS, REFER TO -001LF

spec ref	-	dr	Jeffrey Lim	2014/12/17	projection	MM	size	A3	scale	1:1									
tolerance std	TOLERANCES UNLESS OTHERWISE SPECIFIED	eng	Jeffrey Lim	2021/08/04			ecn no	ELX-S-41907-1											
-		chr	-	-			rel level	Released											
surface	<table border="1"> <tr> <td rowspan="3"> </td> <td>linear</td> <td>0.X</td> <td>±-</td> </tr> <tr> <td></td> <td>0.XX</td> <td>±0.20</td> </tr> <tr> <td></td> <td>0.XXX</td> <td>±-</td> </tr> <tr> <td></td> <td>angular</td> <td>0°</td> <td>±2°</td> </tr> </table>		linear	0.X	±-		0.XX	±0.20		0.XXX	±-		angular	0°	±2°		<b>12G SAS RECEPTACLE</b> R/A ASSY, Z-HT. 0.35	dwg no 10123371	rev <b>D</b>
	linear		0.X	±-															
			0.XX	±0.20															
		0.XXX	±-																
	angular	0°	±2°																
-		appr	Koon-Poh Tay	2021/08/10	product family		Product - Customer Drw		sheet 2 of 4										

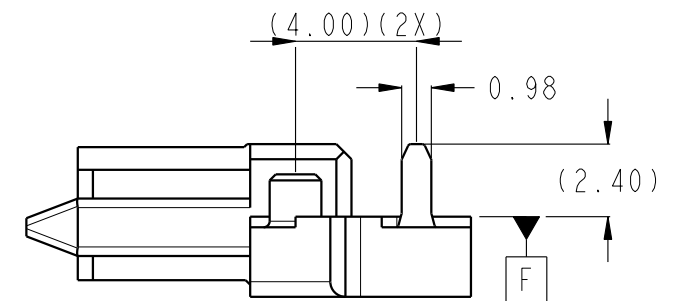
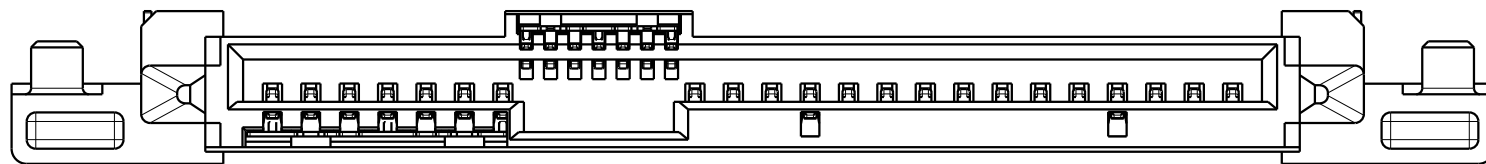
PRODUCT NO.  
10123371-003C-TRLF



(40.00)



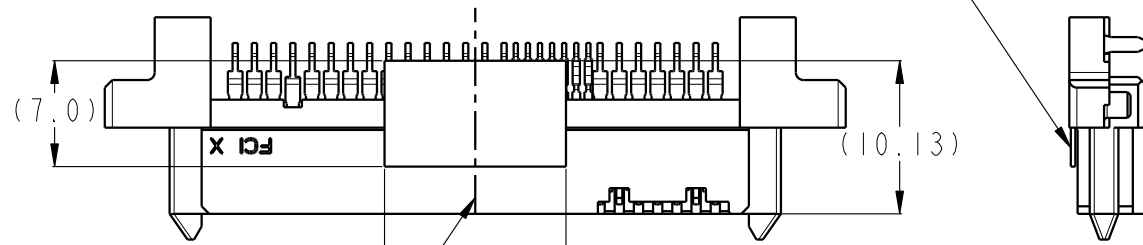
CL OF DATUM B



SCALE 4:1

FOR MORE DIMENSIONS, REFER TO -0011E

PICK-UP TAPE  
(KAPTON)

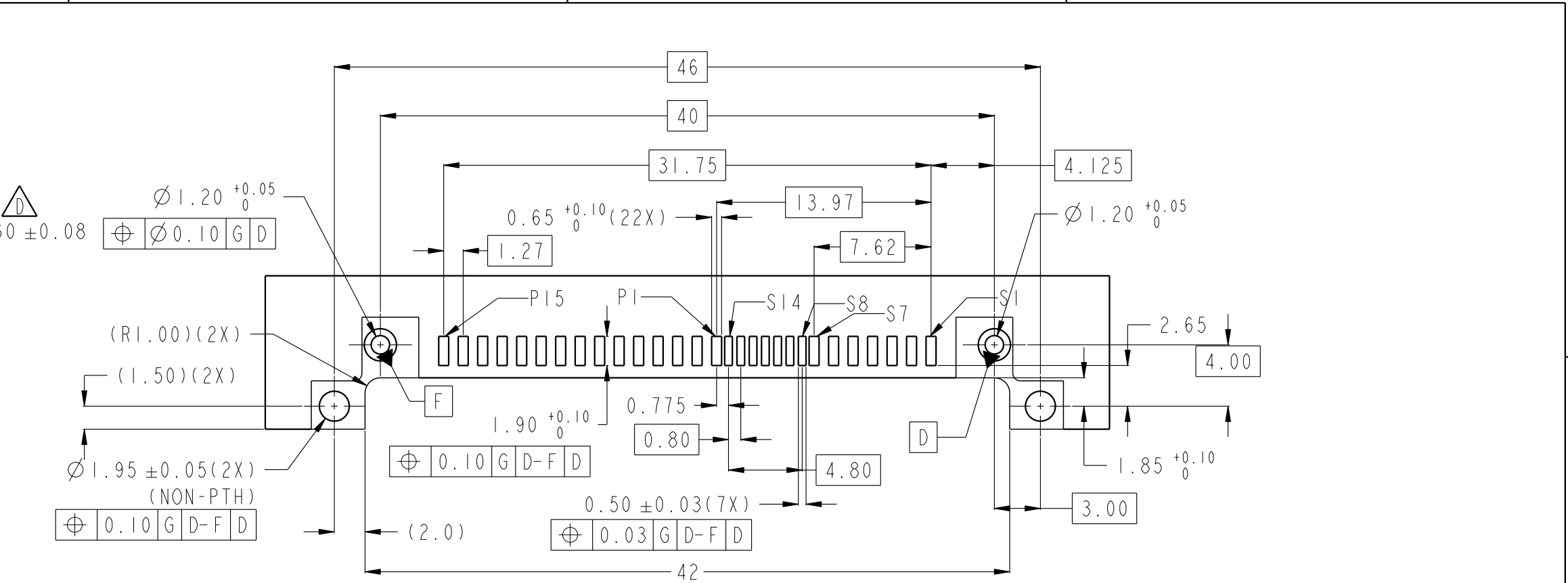


CL OF PICK-UP TAPE AND  
CONNECTOR

SCALE 2:1  
WITH KAPTON TAPE ATTACHED

spec ref	-	dr	Jeffrey Lim	2014/12/17	projection	MM	size	A3	scale	1:1												
tolerance std	TOLERANCES UNLESS OTHERWISE SPECIFIED	eng	Jeffrey Lim	2021/08/04			ecn no	ELX-S-41907-1														
-		chr	-	-			rel level	Released														
surface	<table border="1"> <tr> <td>linear</td> <td>0.X</td> <td>±-</td> </tr> <tr> <td></td> <td>0.XX</td> <td>±0.20</td> </tr> <tr> <td></td> <td>0.XXX</td> <td>±-</td> </tr> <tr> <td>angular</td> <td>0°</td> <td>±2°</td> </tr> </table>	linear	0.X	±-		0.XX	±0.20		0.XXX	±-	angular	0°	±2°	appr	Koon-Poh Tay	2021/08/10	product family		dwg no	10123371	rev	D
linear	0.X	±-																				
	0.XX	±0.20																				
	0.XXX	±-																				
angular	0°	±2°																				
-		amphenol-icc.com	cat. no.	12G SAS RECEPTACLE R/A ASSY, Z-HT. 0.35		Product - Customer Drw	sheet 3 of 4															

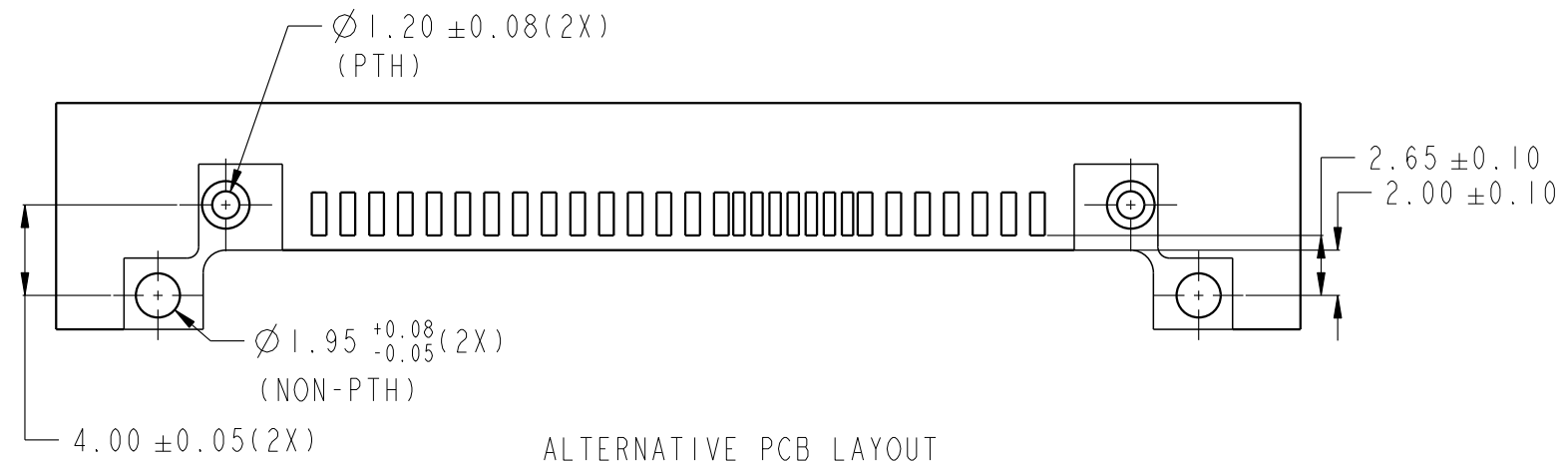
PRODUCT NO.	PACKAGING
10123371-001LF	TRAY
10123371-002LF	
10123371-001TRLF	TAPE & REEL
10123371-002TRLF	
10123371-003C-TRLF	



SCALE 3:1

RECOMMENDED PCB LAYOUT  
(GENERAL TOLERANCE: ±0.05)

- NOTES:
- MATERIALS:
    - HOUSING: HIGH TEMP THERMOPLASTIC, UL 94V-0, COLOUR: BLACK
    - TERMINAL, FORK-LOCK CLIP AND GROUND CONTACT: COPPER ALLOY
    - KAPTON TAPE: POLYIMIDE
  - FINISH:
    - TERMINAL: 30µ" MIN Au PLATING (CONTACT POINT) OVER 50µ" MIN NICKEL
    - SOLDER TAIL: 100µ" MIN TIN OVER 50µ" MIN NICKEL
    - FORK-LOCK CLIP: 100µ" MIN TIN OVER 50µ" MIN NICKEL
  - PRODUCT SPECIFICATION : GS-12-1120
  - PACKAGING SPECIFICATION: GS-14-841(TRAY); GS-14-966(TAPE & REEL)
  - THIS PRODUCT IS COMPLY WITH SFF-8680 SPECIFICATION
  - THIS PRODUCT MEETS EUROPEAN UNION DIRECTIVES AND OTHER COUNTRY REGULATIONS AS DESCRIBED IN GS-47-0004
  - THE HOUSING WILL WITHSTAND EXPOSURE TO 260° PEAK TEMPERATURE FOR 10 SECONDS IN A CONVECTION, INFRA-RED OR VAPOR PHASE REFLOW OVEN
  - A SYMBOL  $\triangle D$  WILL BE NEXT TO ANY DIMENSION, VIEW, OR NOTE WHICH HAS BEEN MODIFIED WITH THE CURRENT DRAWING REVISION



ALTERNATIVE PCB LAYOUT  
(REFER TO RECOMMENDED PCB LAYOUT FOR UNSPECIFIED DIMENSIONS)

SCALE 3:1

spec ref	-	dr	Jeffrey Lim	2014/12/17	projection	MM	size	A3	scale	1:1	
tolerance std	TOLERANCES UNLESS OTHERWISE SPECIFIED	eng	Jeffrey Lim	2021/08/04	$\oplus$	←→	ecn no	ELX-S-41907-1			
-	-	chr	-	-			rel level	Released			
surface	linear	0.X	±-	<b>Amphenol FCI</b>	product family				12G SAS RECEPTACLE	10123371	rev D
-	✓	0.XX	±0.20		R/A ASSY, Z-HT. 0.35						
-	angular	0°	±2°		amphenol-icc.com						
-		appr	Koon-Poh Tay	2021/08/10	-		Product - Customer Drw		sheet 4 of 4		

Amphenol FCI © 2016 AFCI