

10147444- A A B C D E L F

AA	POSITION
01	2X05
02	2X10
03	2X15
04	2X20
05	2X25
06	2X30

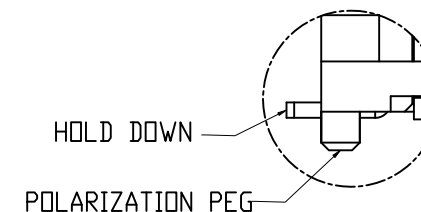
B	DESCRIPTION
1	PLUG 1
3	PLUG 3
5	PLUG 5
7	PLUG 7

D	POLARIZATION PEG	HOLD DOWN
0	YES	YES
1	NO	YES
2	YES	NO
3	NO	NO

E	PACKAGING
0	TAPE AND REEL WITHOUT CAP

C	PLATING: CONTACT AREA/SOLDER TAIL AREA
2	30u" Au ON CONTACT AREA OVER 50u" Ni Min GOLD FLASH ON SOLDER TAIL OVER 50u" Ni Min

10147444 SERIES (PLUG SERIES)		
COMBINATION OF MATED HEIGHT 3.0-4.0mm	Plug 1	Plug 3
COMBINATION OF MATED HEIGHT 5.0-6.0mm	Plug 5	Plug 7
10147445 SERIES (REC. SERIES)	Recep 1	
COMBINATION OF MATED HEIGHT 2.0-2.70mm	Recep 2	



NOTE:

- MATERIAL:  
HOUSING: THERMOPLASTIC BLACK UL94V-0  
TERMINAL: COPPER ALLOY  
HOLD DOWN: COPPER ALLOY
- PLATING:  
TERMINAL: SEE PRODUCT DESCRIPTION  
HOLD DOWN: 100u" Tin Min ON SOLDER TAIL OVER 50u" Ni Min
- SEE GS-12-1298 FOR PRODUCT SPEC.
- PACKAGING: TAPE AND REEL WITHOUT CAP.
- THIS PRODUCT MEETS THE EUROPEAN UNION DIRECTIVES AND OTHER COUNTRY REGULATIONS AS DESCRIBED IN GS-22-008.

spec ref	dr Laurence.Zang	2018-03-07	projection	mm	size A3	scale 1:1
tolerance std	eng Laurence.Zang	2018-03-07		← →	ecn no	RELEASE
	chr -	-				
surface	appr Tim Yao	2018-03-07	product family	Bergstak	rel level	RELEASE
	linear	0.X ±0.2	Amphenol FCI title		0.XX ±0.15	0.XXX ±0.10
	angular	0' ±2'	www.fci.com cat. no.		0.5mm PITCH BTB CONNECTOR	PLUG
					Product - Customer drw	10147444
						rev A

A

B

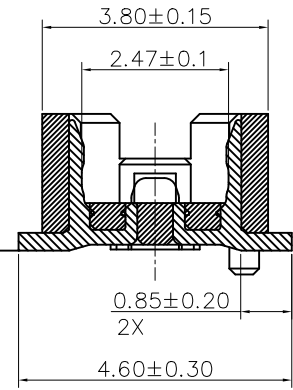
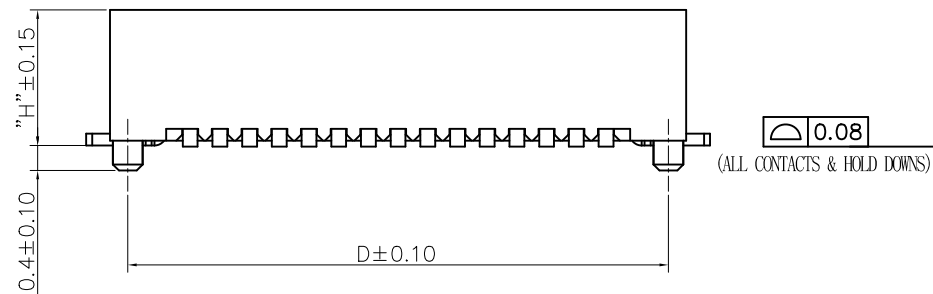
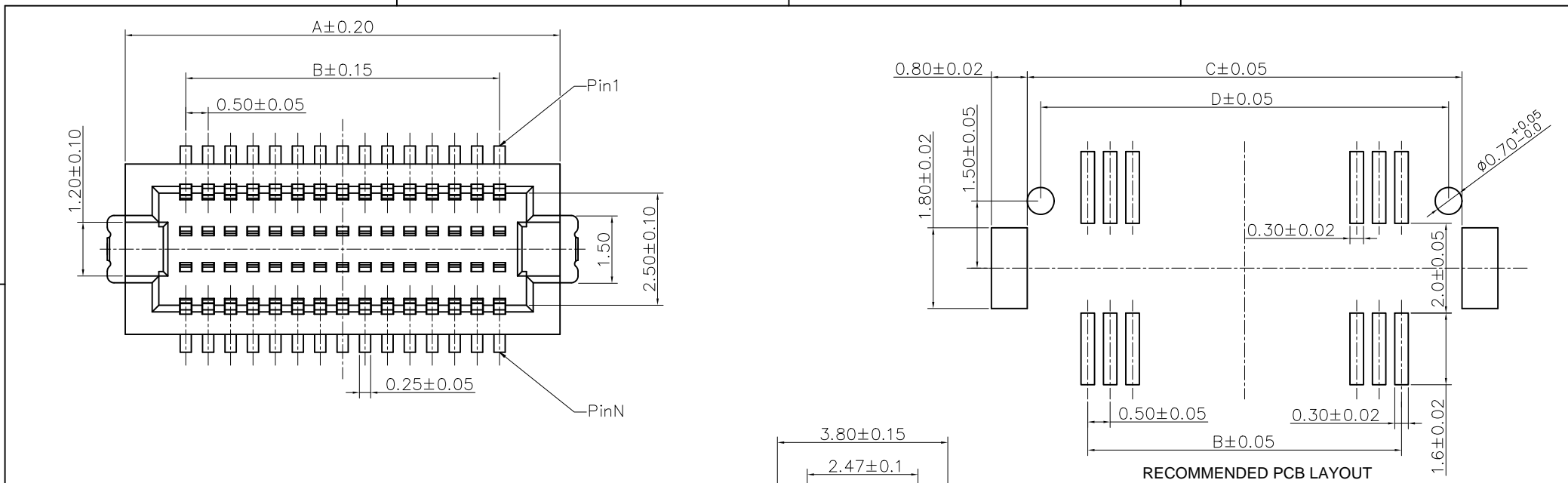
D

A

B

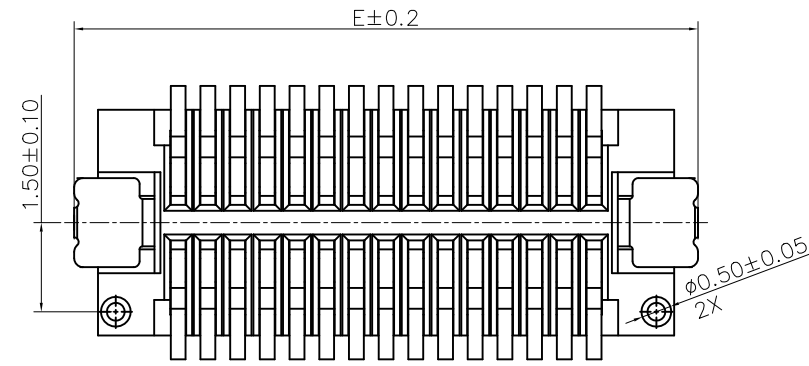
C

D



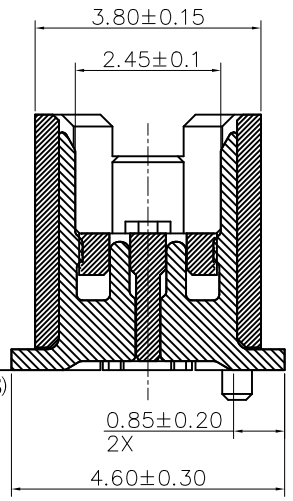
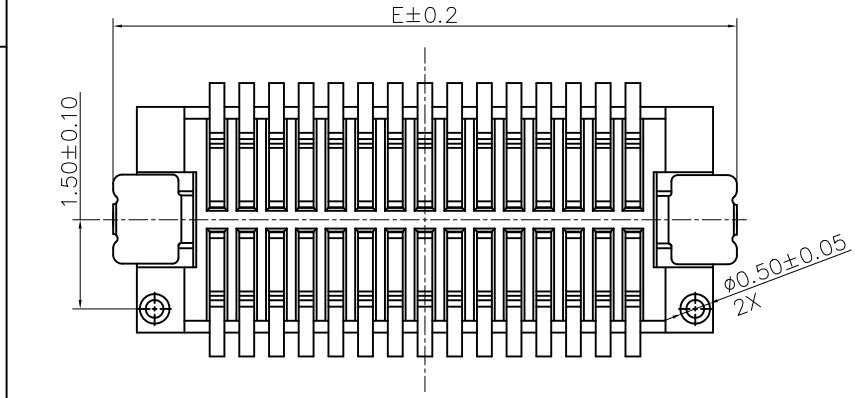
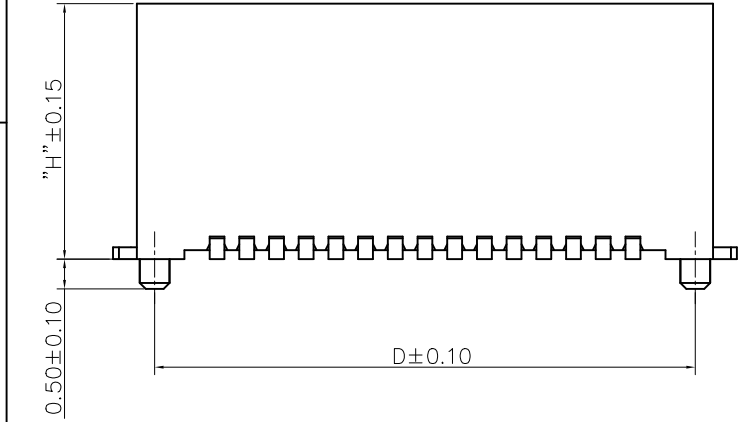
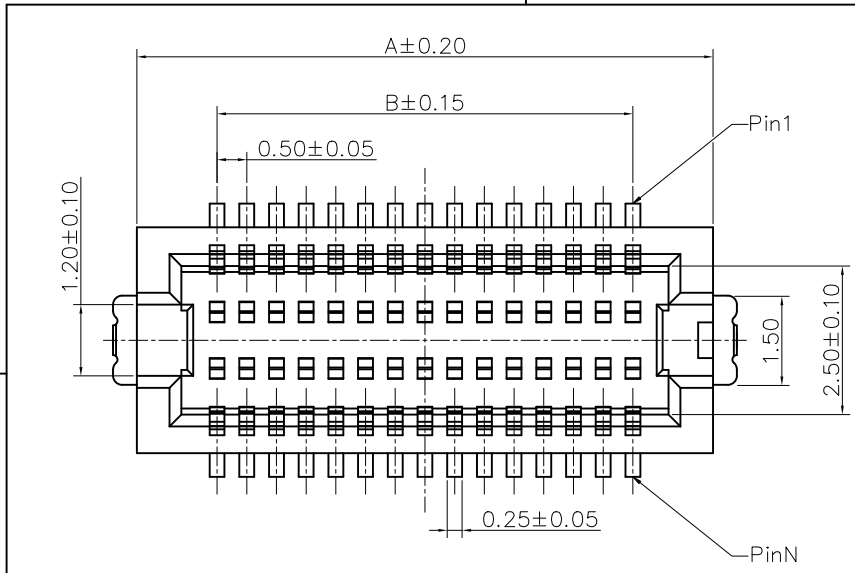
TYPE	"H"
PLUG 1	2.30
PLUG 3	3.30

pin.No.	A	B	C	D	E
10	4.70	2.00	4.70	4.10	5.50
20	7.20	4.50	7.20	6.60	8.00
30	9.70	7.00	9.70	9.10	10.50
40	12.20	9.50	12.20	11.60	13.00
50	14.70	12.00	14.70	14.10	15.50
60	17.20	14.50	17.20	16.60	18.00

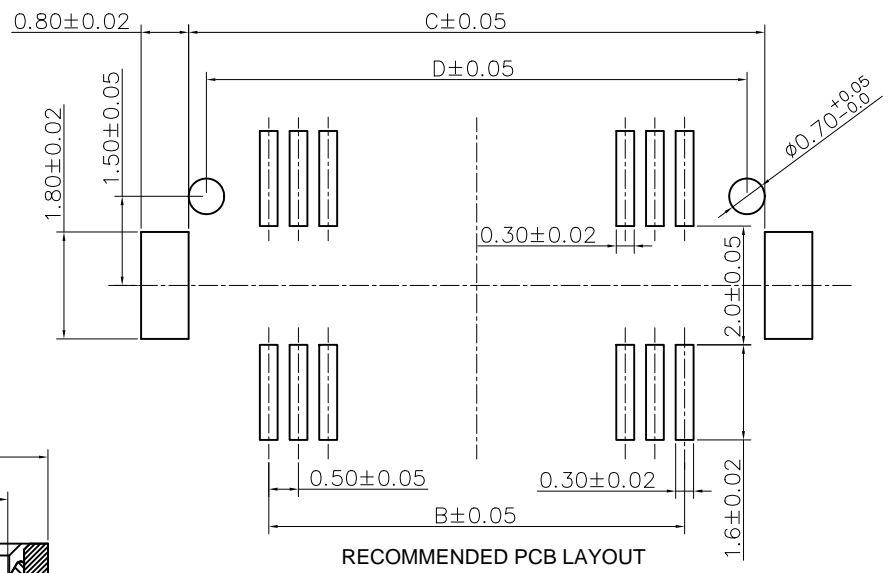


PLUG 1&3

dr Laurence.Zang	2018/06/22	projection	mm	size	scale
eng Laurence.Zang	2018/06/22			A3	1:1
chr -	-		← →	ecn no	
appr Tim Yao	2018/06/22			-	
product family		Bergstak		ret level	RELEASE
<b>Amphenol FCI</b> title 0.5mm PITCH BTB CONNECTOR PLUG			dwg no	10147444	rev A
www.fci.com cat. no.		-		Product - Customer drw	



TYPE	"H"
PLUG 5	4.30
PLUG 7	5.30



RECOMMENDED PCB LAYOUT

pin.No.	A	B	C	D	E
10	4.70	2.00	4.70	4.10	5.50
20	7.20	4.50	7.20	6.60	8.00
30	9.70	7.00	9.70	9.10	10.50
40	12.20	9.50	12.20	11.60	13.00
50	14.70	12.00	14.70	14.10	15.50
60	17.20	14.50	17.20	16.60	18.00

PLUG 5&7

dr	Laurence.Zang	2018/06/22	projection	mm	size	A3	scale	1:1
eng	Laurence.Zang	2018/06/22			ecn no			
chr	-	-	product family	Bergstak	rel level	RELEASE		
appr	Tim Yao	2018/06/22						
Amphenol FCI title			0.5mm PITCH BTB CONNECTOR		dwg no	10147444	rev	A
www.fci.com cat. no.			-		Product - Customer drw		sheet 3 of 3	