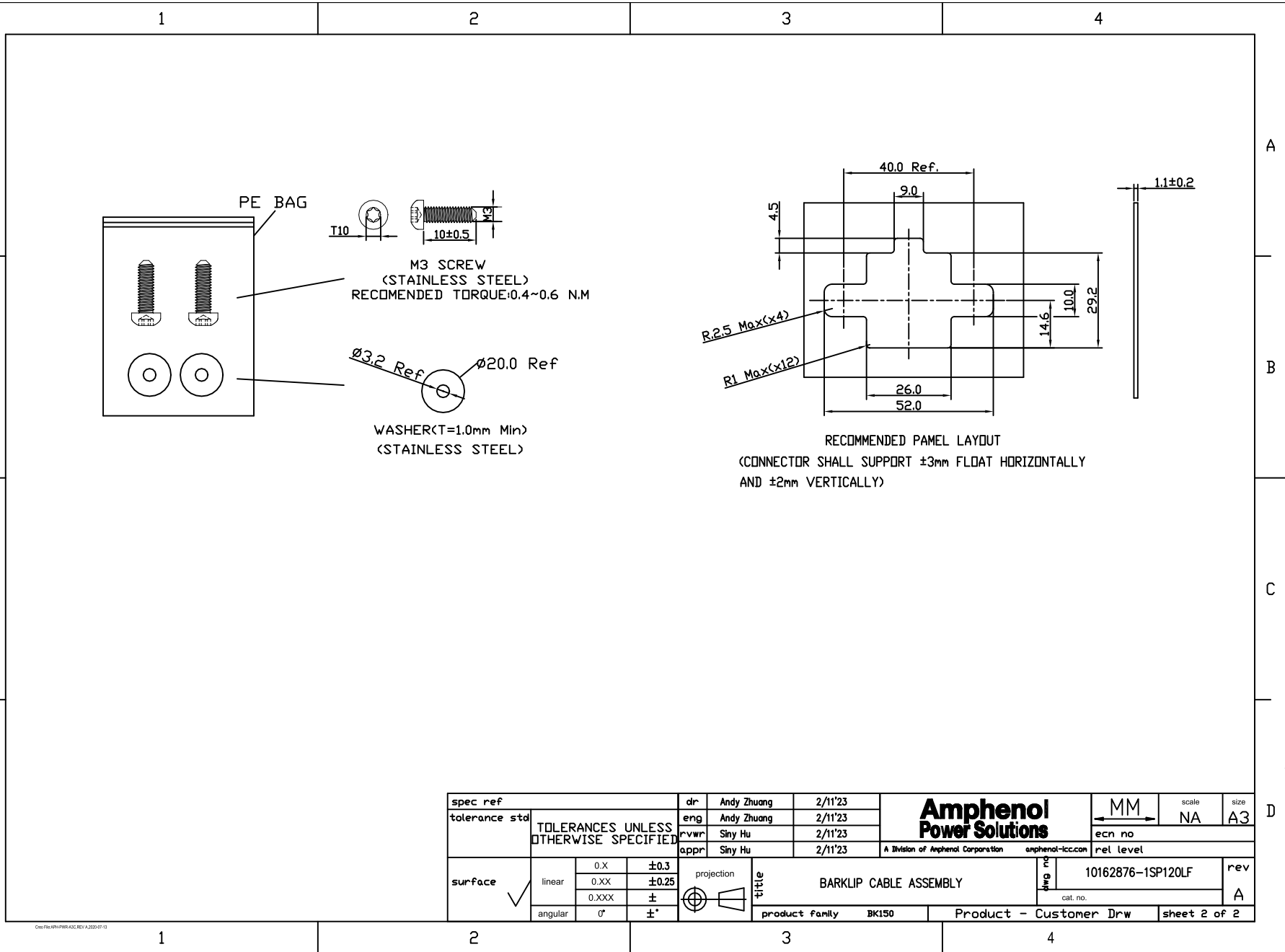


NOTES:

1. END 'A' MATE WITH 6.00±0.20mm THICKNESS SILVER PLATING BUSBAR
2. ALL CABLE ASSEMBLIES SHALL 100% OPEN/SHORT TEST
3. SILVER PLATING CONTACT MAY DISCOLOR IN AIR, BUT NO PERFORMANCE ISSUE
4. AS LONG AS WIRE PIN ASSIGNMENT IS CORRECT, THE DIFFERENT COLOR CABLE LINE ON TOP OR BOTTOM CAN BE ACCEPTED. CROSS POINT POSITION IS ALSO NOT LIMITED.
5. MOUNTING HARDWARE:
2xM3 SCREWS
2x20mm dia. WASHERS
TORQUE SPEC: 0.4~0.6 N.M

spec ref		dr	Andy Zhuang	2/11'23	Amphenol Power Solutions	MM	scale	size
tolerance std		eng	Andy Zhuang	2/11'23		ecn no	NA	A3
TOLERANCES UNLESS OTHERWISE SPECIFIED		rvwr	Siny Hu	2/11'23		rel level		
		appr	Siny Hu	2/11'23		A Division of Amphenol Corporation amphenol-icc.com		
surface	linear	0.X	±0.3	projection	title	10162876-1SP120LF		rev
		0.XX	±0.25			cat. no.	A	
		0.XXX	±	product family	BK150	Product - Customer Drw	sheet 1 of 2	
	angular	0°	±°					

Doc No: AMPH150-ASZ-REV A-2020-07-11



spec ref				dr	Andy Zhuang	2/11'23		MM	scale	size
tolerance std	TOLERANCES UNLESS OTHERWISE SPECIFIED			eng	Andy Zhuang	2/11'23		NA	A3	
surface	linear	0.X	± 0.3	proj	Siny Hu	2/11'23		ecn no		
		0.XX	± 0.25	title	Siny Hu	2/11'23		rel level		
	angular	0°	\pm	product family	BK150	Product - Customer Drw	10162876-1SP120LF	cat. no.	rev	A

Doc No: AMPH-PWR-ASZ-REV A-2020-07-11