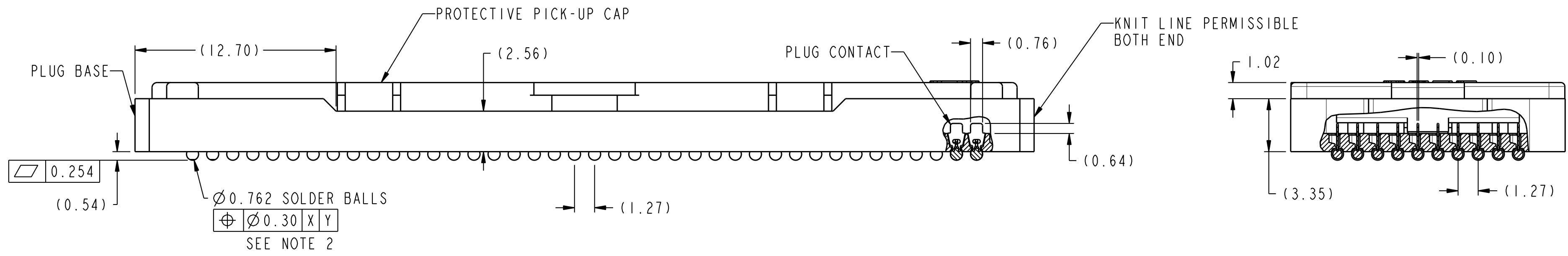
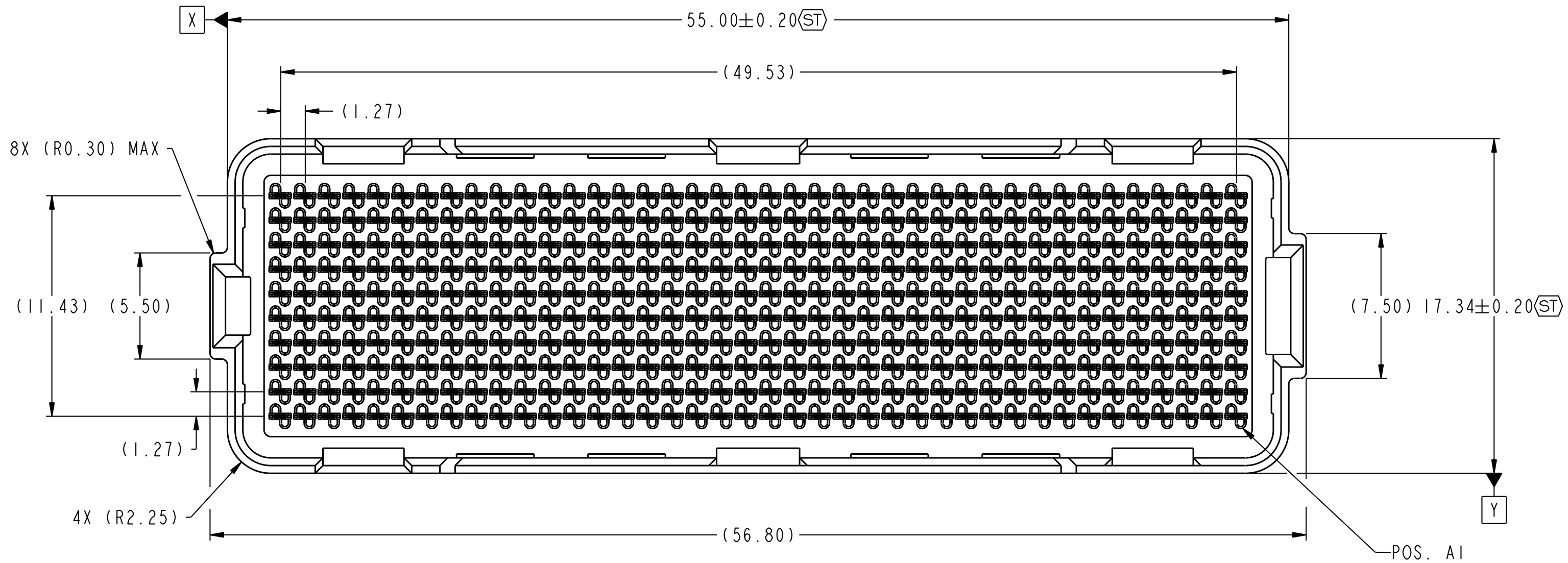


PRODUCT NUMBER
SEE TABLE-SHEET 5



Ø0.762 SOLDER BALLS

| | | | |
|---|-------|---|---|
| ⊕ | Ø0.30 | X | Y |
|---|-------|---|---|

 SEE NOTE 2

| | | | | | | | | | | |
|---------------------------------------|------------|------|----------------|---|------------|------------------------------------|--------------|-----------------|-----------|----------------|
| spec ref | - | dr | Rajendran, Kar | 2018/01/31 | projection | MM | size | A2 | scale | 1:1 |
| tolerance std | ASME Y14.5 | eng | Robert Brown | 2019/02/16 | | | ecn no | ELX-V-32686-1 | rel level | Released |
| TOLERANCES UNLESS OTHERWISE SPECIFIED | | chr | - | appr | | | John Ravert | 2019/02/15 | | product family |
| surface | linear | 0.X | ±0.3 | Amphenol FCI Omm PLUG ASSEMBLY 10 X 40 = 400 POSITIONS | | cat. no. Product - Customer Drw | sheet 1 of 4 | rev S | | |
| | | 0.XX | ±0.10 | | | | | | | |
| | angular | 0° | ±2° | | | | | | | |

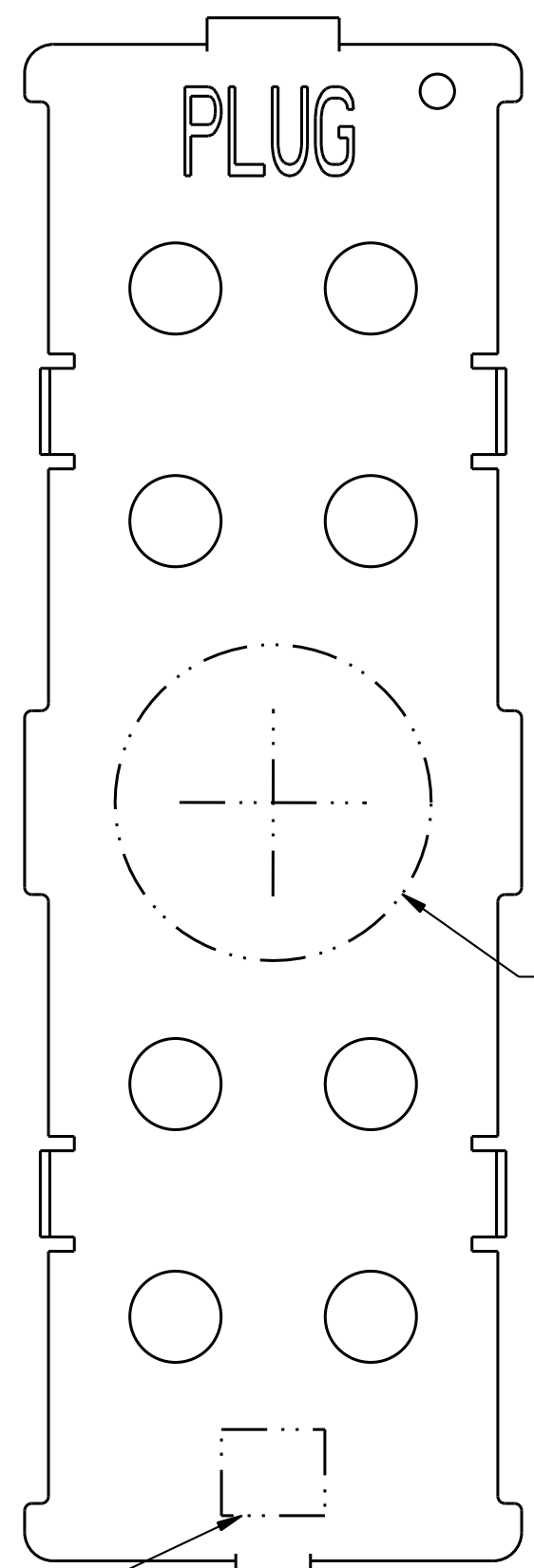
PDS: Rev :S

STATUS:Released

Printed: Feb 16, 2019

© 2016 AFCI
 Amphenol FCI

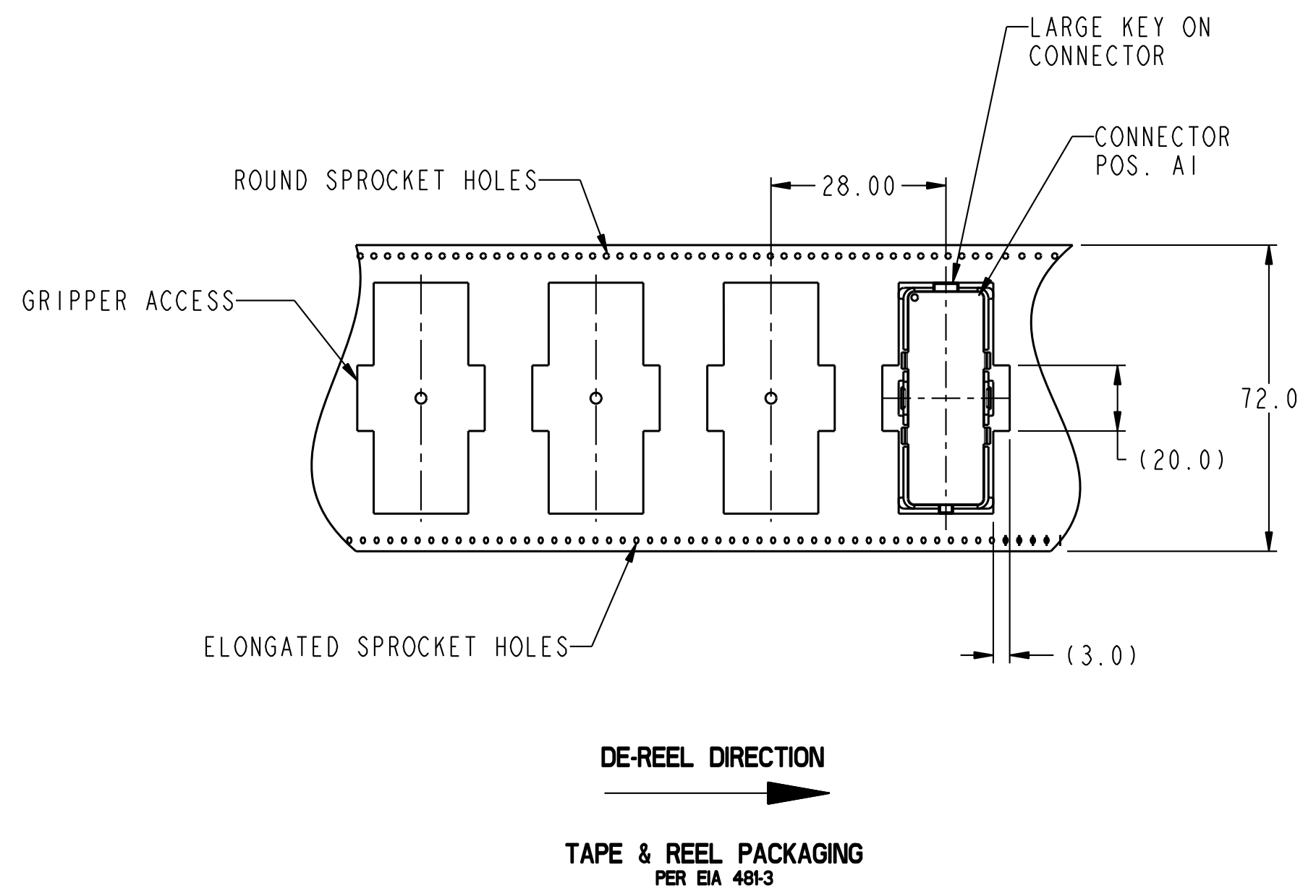
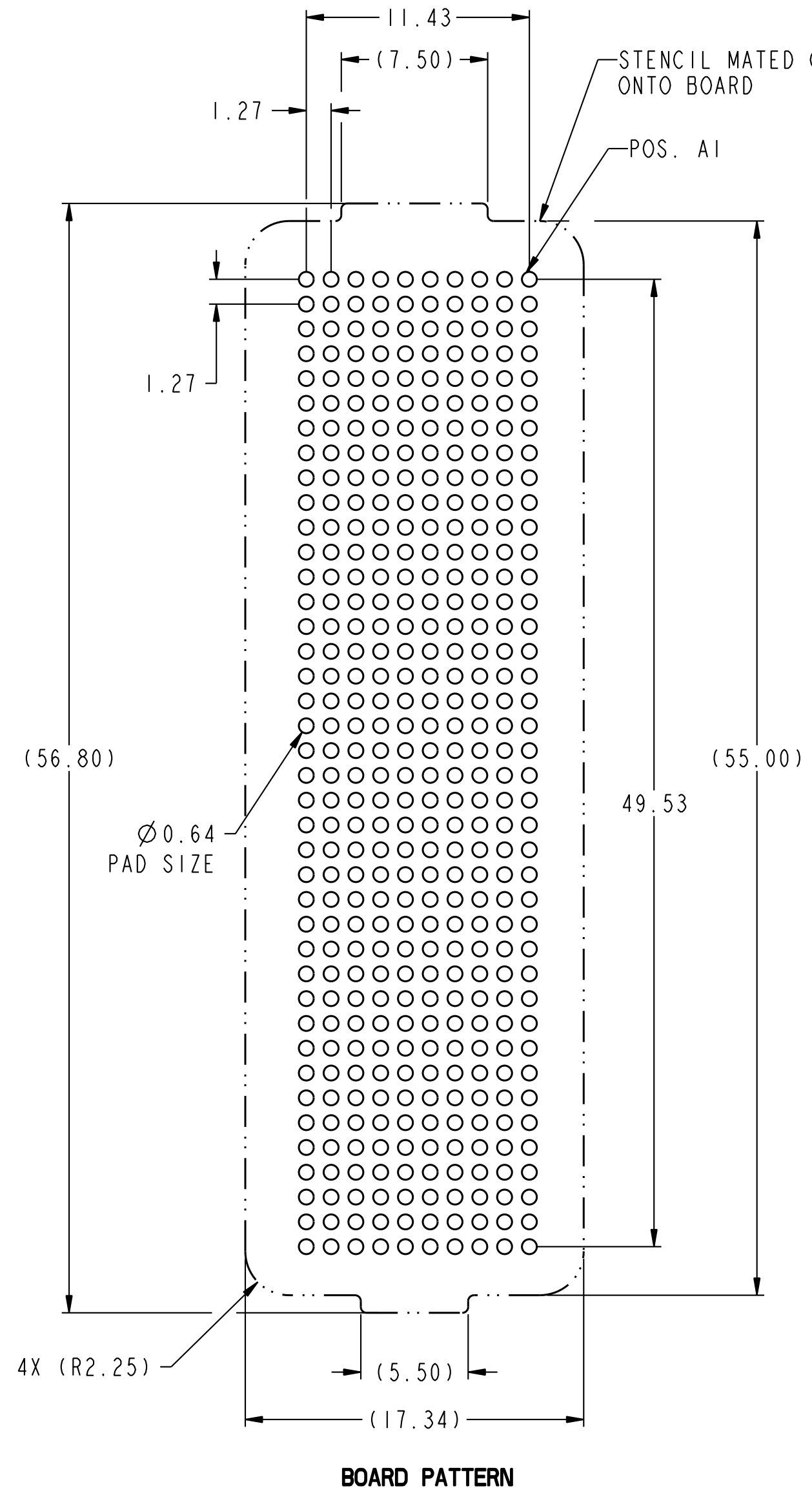
PRODUCT NUMBER
SEE TABLE-SHEET 5



PLUG

Ø11.00

NOTE 9
VACUUM AREA FOR PICK UP CAP



Amphenol FCI

© 2016 AFCI

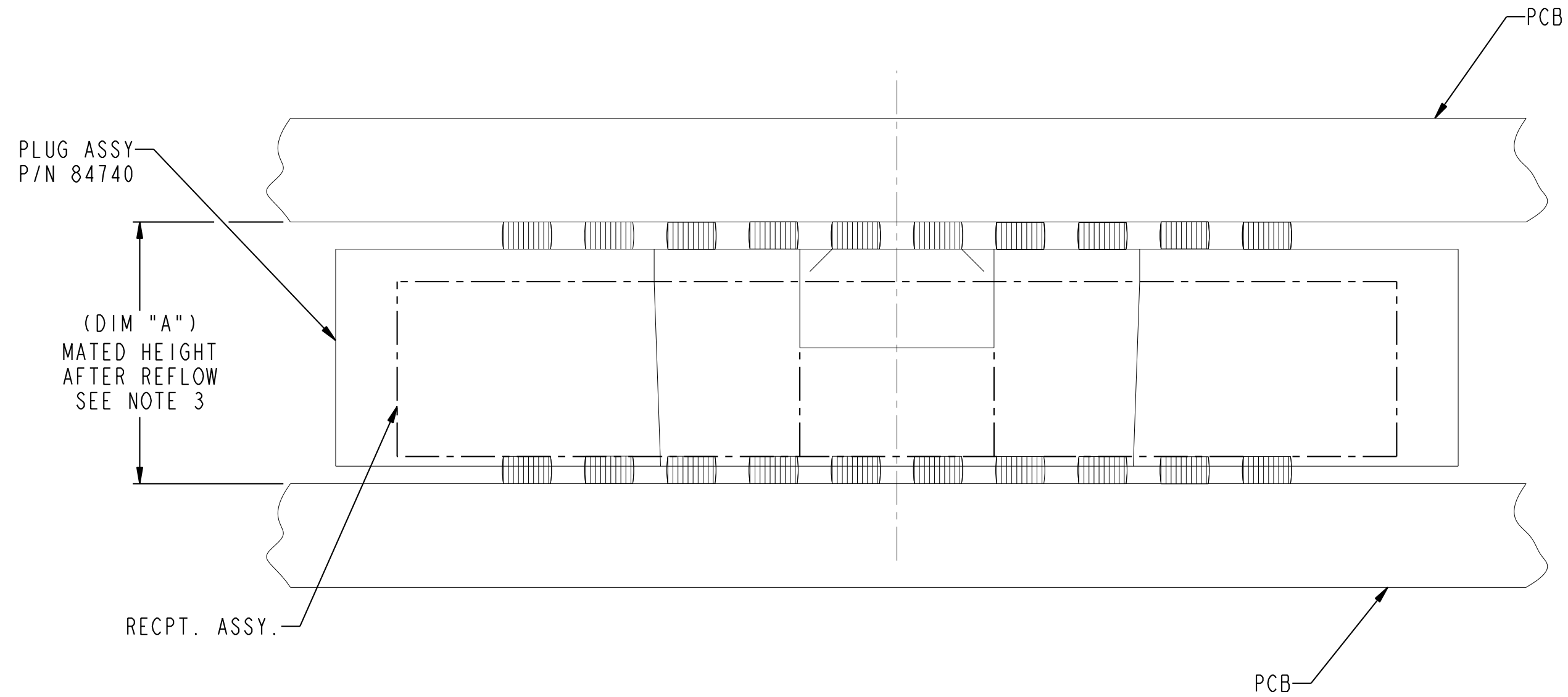
| | | | | | | | | | | |
|---------------------------------------|------------|-------|----------------|---|-----------------|----------|----------------|---------------|---|-----|
| spec ref | - | dr | Rajendran, Kar | 2018/01/31 | projection | MM | size | A2 | scale | 3:1 |
| tolerance std | ASME Y14.5 | eng | Robert Brown | 2019/02/16 | | | ecn no | ELX-V-32686-1 | Product - Customer Draw sheet 2 of 4 | |
| TOLERANCES UNLESS OTHERWISE SPECIFIED | | chr | - | rel level | | | Released | | | |
| | | appr | John Ravert | 2019/02/15 | | | product family | MEG-ARRAY | | |
| surface | linear | 0.X | ±0.3 | Amphenol FCI Omm PLUG ASSEMBLY 10 X 40 = 400 POSITIONS cat. no. | dig no 84740 | rev S | | | | |
| | | 0.XX | ±0.10 | | | | | | | |
| | | 0.XXX | ±0.050 | | | | | | | |
| ASME Y14.5 | angular | 0° | ±2° | | | | | | | |

PDS: Rev :S

STATUS:Released

Printed: Feb 16, 2019

PRODUCT NUMBER
SEE TABLE-SHEET 5



| MATED HEIGHT TABLE | |
|--------------------|------------------|
| DIM. A | RECPT. ASSY. P/N |
| 4.0 | 74221 |
| 6.0 | 74388 |
| 8.0 | 74390 |


MATED HEIGHT AFTER REFLOW IS BASED ON $\varnothing 0.64\text{mm}$ PAD (METAL-DEFINED)
AND 0.13mm SOLDER PASTE STENCIL THICKNESS. SEE NOTE 3

END VIEW - MATED CONNECTORS

| | | | | | | | | | | |
|---------------------------------------|------------|---------|----------------|---------------|------------------------|----|---|---------------|-------------------|----------|
| spec ref | - | dr | Rajendran, Kar | 2018/01/31 | projection | MM | size | A2 | scale | 1:1 |
| tolerance std | ASME Y14.5 | eng | Robert Brown | 2019/02/16 | | | ecn no | ELX-V-32686-1 | rel level | Released |
| TOLERANCES UNLESS OTHERWISE SPECIFIED | | chr | - | apppr | | | | | | |
| surface | ASME Y14.5 | linear | 0.X | ± 0.3 | | | Omm PLUG ASSEMBLY 10 X 40 = 400 POSITIONS | | cat. no. 84740 | rev S |
| | | angular | 0° | $\pm 2^\circ$ | Product - Customer Drw | | sheet 3 of 4 | | | |

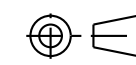

| 1 | 2 | 3 | 4 | 5 | 6 | 7 | 8 |
|----------------|------------|------------------------------|------------------|---------|---|---|---|
| PRODUCT NUMBER | PIC-UP CAP | CONTACT PLATING, SEE NOTE 10 | SOLDER BALLS | NOTES | | | |
| 84740-002 | YES | 15µ" (0.38µm) Au | SnPb | - | | | |
| 84740-002LF | YES | 15µ" (0.38µm) Au | SnAgCu LEAD FREE | 7 | | | |
| 84740-092 | YES | 15µ" (0.38µm) GXT | SnPb | - | | | |
| 84740-092LF | YES | 15µ" (0.38µm) GXT | SnAgCu LEAD FREE | 7 | | | |
| 84740-102 | YES | 30µ" (0.76µm) Au | SnPb | - | | | |
| 84740-102LF | YES | 30µ" (0.76µm) Au | SnAgCu LEAD FREE | 7 | | | |
| 84740-192 | YES | 30µ" (0.76µm) GXT | SnPb | - | | | |
| 84740-192LF | YES | 30µ" (0.76µm) GXT | SnAgCu LEAD FREE | 7 | | | |
| 84740-202 | YES | Au SPECIAL | SnPb | 4 | | | |
| 84740-202LF | YES | Au SPECIAL | SnAgCu LEAD FREE | 4 AND 7 | | | |
| 84740-292 | YES | GXT SPECIAL | SnPb | 4 | | | |
| 84740-292LF | YES | GXT SPECIAL | SnAgCu LEAD FREE | 4 AND 7 | | | |
| 84740-A02 | YES | SPECIAL | SnPb | 8 | | | |
| 84740-A02LF | YES | SPECIAL | SnAgCu LEAD FREE | 7 AND 8 | | | |

NOTES:

- ① MATERIAL:
HOUSING: LCP, COLOR IS WHITE
PICK-UP CAP: LCP, COLOR IS BLACK
CONTACT: COPPER ALLOY
- ② SOLDER BALLS WILL NOT BE PERFECT SPHERICAL SHAPE DUE TO REFLOW ATTACHMENT.
- ③ MATED HEIGHT EFFECTED BY CUSTOMER'S PCB PAD SIZE, PLATING, SOLDER REFLOW PROFILE & SOLDER PASTE.
- ④ PLATING FOR INDICATED -2XX SERIES PART NOS. IS Au OVER Ni WITH SPECIAL CONTACT GEOMETRY TO MEET REQUIREMENTS OF TELCORDIA GR-1217-CORE: CENTRAL OFFICE ENVIRONMENT (25 LIFE EXPECTANCY).
- ⑤ -302, -302LF, -402, -402LF, -502, -502LF ARE OBSOLETE AND REMOVED FROM THE PRODUCT NUMBER TABLE.
- ⑥ FOR PROPER APPLICATION FOLLOW AFCI APPLICATION SPECIFICATION GS-20-033 LEAD FREE SOLDER BALLS WILL NOT SOLDER PROPERLY IN A LEADED SOLDER PROCESS DUE TO A HIGHER REFLOW TEMPERATURE. LEAD FREE PRODUCT IS THEREFORE NOT BACKWARDS WITH LEADED OR SOME SOLDERING APPLICATIONS.
- ⑦ THIS PRODUCT MEETS EUROPEAN UNION DIRECTIVES AND OTHER COUNTRY REGULATIONS AS DESCRIBED IN GS-47-0004 PRODUCT MEETING THIS DIRECTIVE IS IDENTIFIED IN THE LOT CODE NUMBER MARKED ON EACH PART BY HAVING AN "X" IN THE SEVENTH CHARACTER POSITION.
- ⑧ 84740-A02, -A02LF ARE CUSTOMER SPECIALS.
- ⑨ CURRENT COMPANY LOGO TO BE VISIBLE IN APPROXIMATE AREA SHOWN.
- 10. FOR PURPOSES OF MAXIMIZING MANUFACTURING UTILIZATION, PLATED TERMINALS WITH HIGHER PLATING THICKNESS THAN THE REQUIRED AMOUNT, MAY BE SUBSTITUTED FOR TERMINALS WITH THE REQUIRED PLATING.
- 11. PLUG TERMINAL MAY OR MAYNOT INCLUDE ANTI-WICKING SLOT FEATURE THAT IS TYPICALLY ASSOCIATED WITH HIGHER PLATING THICKNESS OPTIONS.
- 12. A  SYMBOL WILL BE NEXT TO ANY DIMENSION OR NEW VIEW OR NOTE WHICH HAS BEEN MODIFIED WITH THE CURRENT DRAWING REVISION.

Amphenol FCI

© 2016 AFCI

| | | | | | | | | | | |
|---------------|---------------------------------------|-------|----------------|---|---|-------------------|--------|------------------------|-----------|------------------------|
| spec ref | - | dr | Rajendran, Kar | 2018/01/31 | projection | MM | size | A2 | scale | 1:1 |
| tolerance std | ASME Y14.5 | eng | Robert Brown | 2019/02/16 |  | ← | ecn no | ELX-V-32686-1 | rel level | Released |
| | TOLERANCES UNLESS OTHERWISE SPECIFIED | chr | | apppr | | | | | | |
| surface | linear | 0.X | ±0.3 |  | | Omm PLUG ASSEMBLY | | 10 X 40 =400 POSITIONS | cat. no. | Product - Customer Drw |
| | | 0.XX | ±0.10 | | | | | | | |
| | | 0.XXX | ±0.050 | | | | | | | |
| ASME Y14.5 | angular | 0° | ±2° | diag no | 84740 | rev | S | sheet 4 of 4 | | |

PDS: Rev :S

STATUS:Released

Printed: Feb 16, 2019