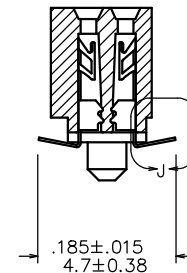
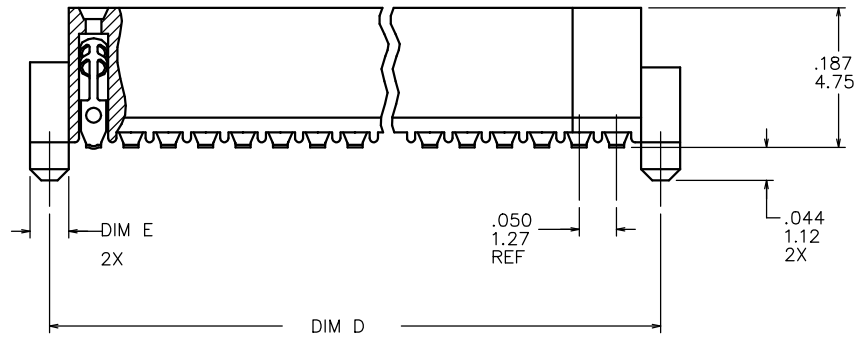
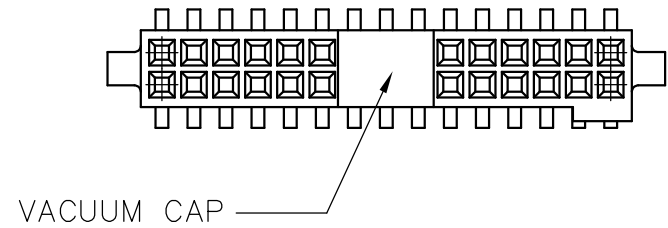
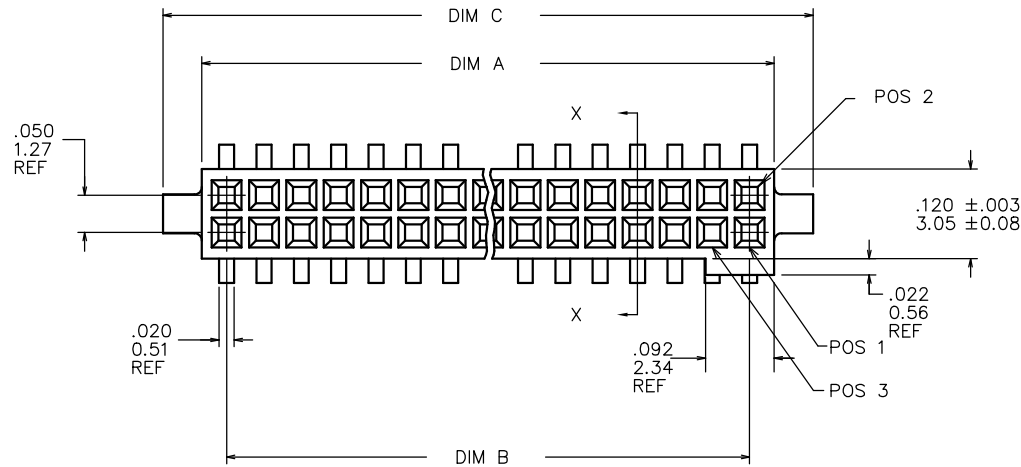
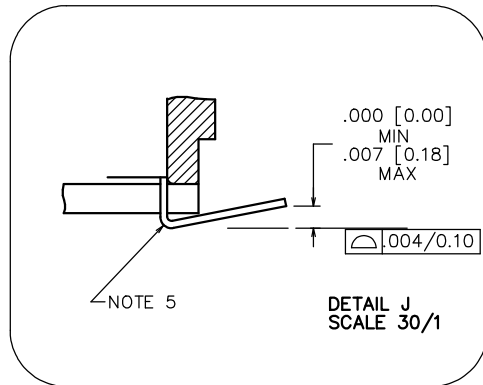


PRODUCT NUMBER  
SEE TABLE



SECTION X-X



mat'l. code		surface		tolerance		projection		product family	
-		ISO 1302 ✓		ISO 406 ISO 1101				RIB CAGE	
ltr	ecn no	dr	date	tolerances unless otherwise specified				title	
AH	ELX-N-19819	JH	12/22/14	angles	linear	$XX \pm .01 / XX \pm 0.3$ $XXX \pm .005 / XXX \pm 0.13$ $XXXX \pm .0020 / XXX \pm 0.051$		<b>.050cc VERT. SMT.</b> W/LOC. & POL. FEATURE	
AJ	ELX-N-39694	MX	12/21/20	0°±2'				scale 1:1	
AD	M09-0058	CMR	4/06/09	dr	M. CLOUSER	6/26/91		dwg no <b>87024</b> sheet 1 of 3 size <b>A3</b>	
AE	M09-0071	MHT	4/30/09	engr	B. BARUFFALO	6/26/91			
AF	N10-0174	YOH	6/17/10	chr	B. BARUFFALO	6/26/91		type Product Customer Drawing	
AG	ELX-N-010202	YO	2/8/12	appd	B. BARUFFALO	6/26/91			
sheet	revision	AJ	AJ	AJ					
index	sheet	1	2	3					

PRODUCT NO. NOTE 9	SIZE	DIM A	DIM B	DIM C	DIM D	DIM E	SPECIAL PACKAGING	TAPE WIDTH PITCH	PIECES PER REEL
87024-605	2 X 5	.266/6.756	.200/5.08	.370/9.398	.3200/8.128	ø.0520 /1.321	NOTE 6	24mm 12mm	750
-610	2 X 10	.516/13.106	.450/11.43	.620/15.748	.5700/14.478	ø.0520 /1.321	NOTE 6	24mm 12mm	750
-610P	2 X 10	.516/13.106	.450/11.43	.620/15.748	.5700/14.478	ø.0520 /1.321	NOTE 8	24mm 16mm	400
-615	2 X 15	.766/19.456	.700/17.78	.870/22.098	.8200/20.828	ø.0520 /1.321	NOTE 6	44mm 12mm	500
-620	2 X 20	1.016/25.806	.950/24.13	1.120/28.448	1.0700/27.178	ø.0520 /1.321	NOTE 6 & 7	44mm 12mm	500
-625	2 X 25	1.266/32.156	1.200/30.48	1.370/34.798	1.3200/33.528	ø.0520 /1.321	NOTE 6	56mm 12mm	500
-630	2 X 30	1.516/38.506	1.450/36.83	1.620/41.148	1.5700/39.878	ø.0520 /1.321	NOTE 6 & 7	56mm 12mm	500
-635	2 X 35	1.766/44.856	1.700/43.18	1.870/47.498	1.8200/46.228	ø.0520 /1.321	NOTE 6	72mm 12mm	500
-640	2 X 40	2.016/51.206	1.950/49.53	2.120/53.848	2.0700/52.578	ø.0520 /1.321	NOTE 6 & 7	72mm 12mm	500
-645	2 X 45	2.266/57.556	2.200/55.88	2.370/60.198	2.3200/58.928	ø.0520 /1.321	NOTE 6	72mm 12mm	500
-650	2 X 50	2.516/63.906	2.450/62.23	2.620/66.548	2.5700/65.278	ø.0520 /1.321	NOTE 6 & 7	88mm 12mm	500
-625S	2 X 25	1.266/32.156	1.200/30.48	1.370/34.798	1.3200/33.528	ø.0394 /1.00	NOTE 6	56mm 12mm	500

NOTES:

- HOUSING MATERIAL:  
LCP GLASS FILLED FLAME RETARDANT PER UL 94V-0  
COLOR: NATURAL
- TERMINAL MATERIAL: BeCu
- TERMINAL PLATING:  
30u"/.76um MIN HARD GOLD OR GXT OVER Ni ON CONTACT ZONES,  
100u"/2.54um MIN TIN OVER Ni IN SOLDERING ZONES,  
OTHERWISE GOLD FLASH OR UNPLATED.
- APPLICATION INFORMATION:
  - RECOMMENDED MOUNTING PAD PATTERN IS SHOWN IN FIGURE "A".
  - MATING PINS TO BE .0176/0.447 TO .0181/0.459 DIA.
  - MATING PIN TIPS TO BE IN TRUE POSITION TO MATING GRID WITHIN .006/0.15 DIA.
  - SUGGESTED MATING PIN LENGTH .130/3.30 ±.010/0.25.
- LEAD TIPS TO BE ABOVE HEEL, UP TO .007/0.18 MAX. COPLANARITY TO BE MEASURED AT LOWEST POINT (HEEL).
- IF LF P/N THE PRODUCT MEETS EUROPEAN UNION DIRECTIVES AND OTHER COUNTRY REGULATION AS DESCRIBED IN GS-22-008.
- THE HOUSING WILL WITHSTAND EXPOSURE TO 260°C PEAK TEMPERATURE FOR 20 SECONDS IN A CONVECTION, INFRA-RED OR VAPOR PHASE REFLOW OVEN. SEE APPLICATION NOTES/PROCEDURES IF THEY ARE AVAILABLE.
- PRODUCT SPEC PER BUS-12-087.
- PN DEFINE:  
87024-605XXXLF  
 LEAD FREE  
 WITH "TR": TAPE AND REEL+CAP  
 WITH "CT": TUPE+CAP  
 WITHOUT "TR" OR "CT": TUPE, NO CAP  
 WITH "P": THE CARRIER'S PITCH IS 16MM  
 WITHOUT "P": THE CARRIER'S PITCH IS 12MM  
 WITH "S": THE POST'S DIAMETER IS 1.00MM, FOR FIGURE B  
 WITHOUT "S": THE POST'S DIAMETER IS 1.321MM, FOR FIGURE A

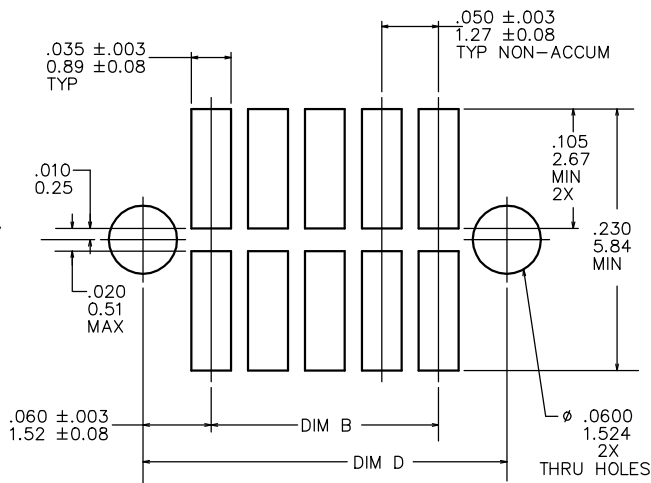


FIGURE A  
RECOMMENDED  
P.C.B. LAYOUT

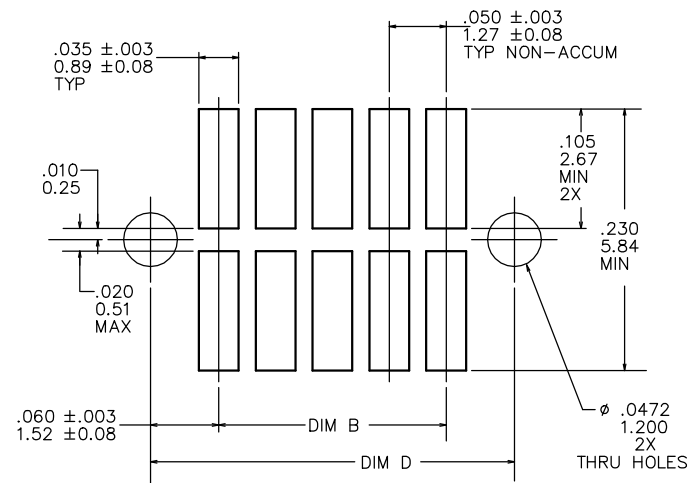


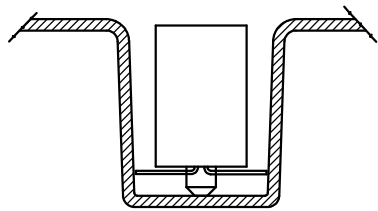
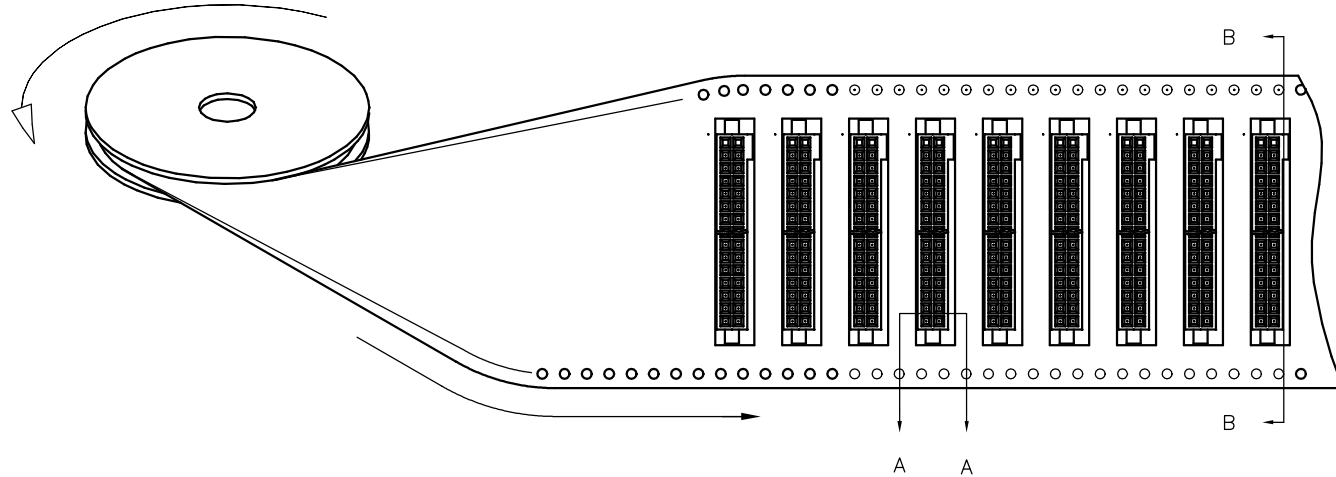
FIGURE B  
RECOMMENDED  
P.C.B. LAYOUT

mat'l. code		surface		tolerance		projection		product family	
-		ISO 1302 ✓		ISO 406				RIB CAGE	
ISO 1101		tolerances unless otherwise specified		XX±.01/XX±0.3		INCH/MM		title	
AJ		angles		XXX±.005/XXX±0.13		scale 1:1		.050cc VERT. SMT.	
		0±2'		XXXX±.0020/XXX±0.051				W/LOC. & POL. FEATURE	
		dr		M. CLOUSER		6/26/91		dwg no	
		enrg		B. BARUFFALO		6/26/91		sheet2 of 3	
		chr		B. BARUFFALO		6/26/91		size	
		app		B. BARUFFALO		6/26/91		87024	
								A3	
								type Product Customer Drawing	
sheet index		revision sheet							

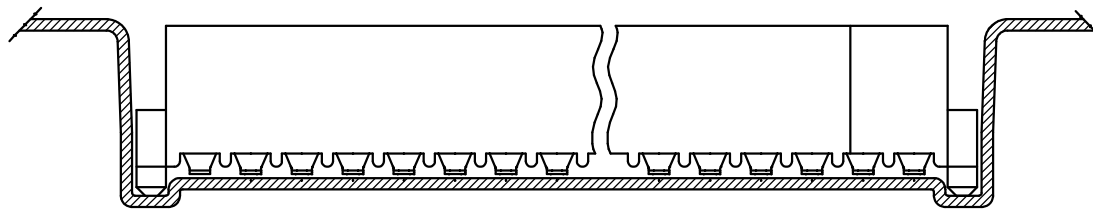
REFERENCE ONLY

TAPE WIDTH'S 32mm AND ABOVE HAS BOTH FEED TRACKS,  
BELOW 32mm HAS TOP FEED TRACK ONLY.

UNREELING  
DIRECTION



SECTION A-A



SECTION B-B

mat'l. code		surface		tolerance		projection		product family	
-		ISO 1302 ✓		ISO 406				RIB CAGE	
ISO 1101		tolerances unless otherwise specified				INCH/MM		title	
ltr	ecn no	dr	date	angles	linear	$XX \pm .01 / XX \pm 0.3$ $XXX \pm .005 / XXX \pm 0.13$ $XXXX \pm .0020 / XXX \pm 0.051$		.050cc VERT. SMT.	
AJ				0°±2'		scale 1:1		W/LOC. & POL. FEATURE	
								dr M. CLOUSER 6/26/91 engr B. BARUFFALO 6/26/91 chr B. BARUFFALO 6/26/91 app B. BARUFFALO 6/26/91	
								dwg no 87024 sheet 3 of 3 size A3	
								type Product Customer Drawing	
sheet	revision								
index	sheet								

Copyright FCI  
 FCIconnect.com