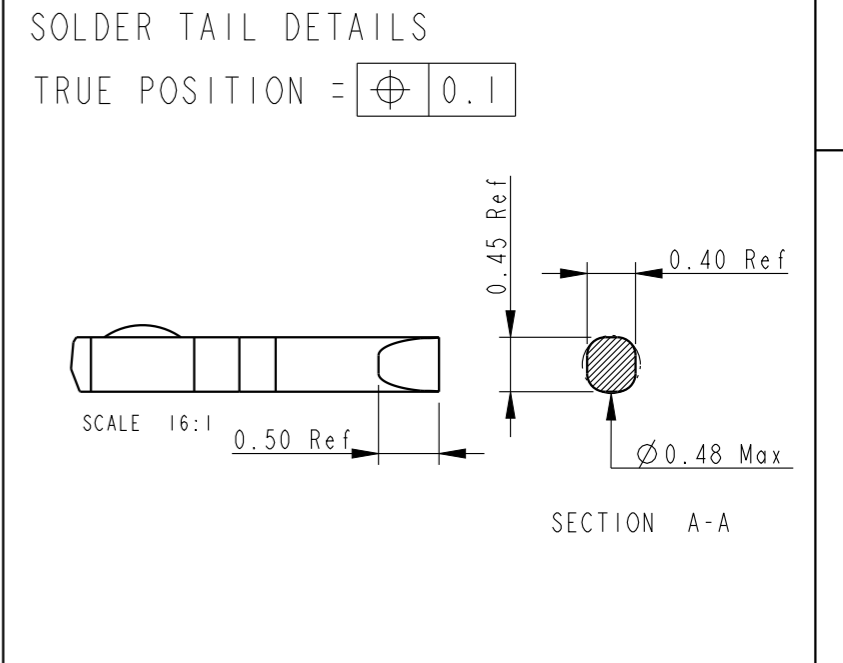
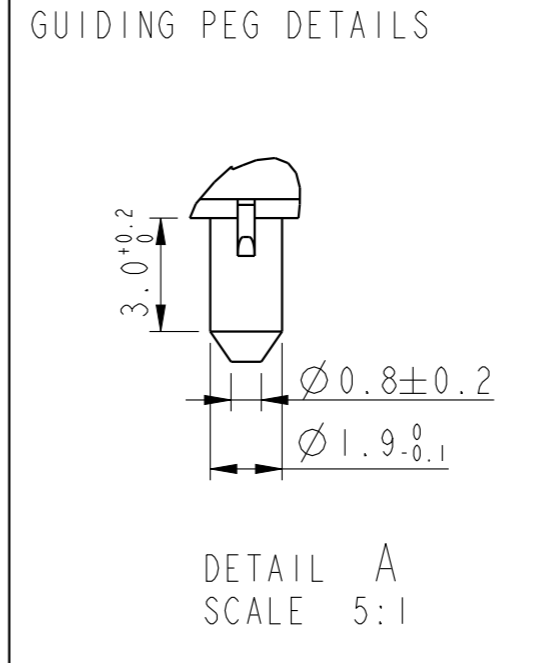
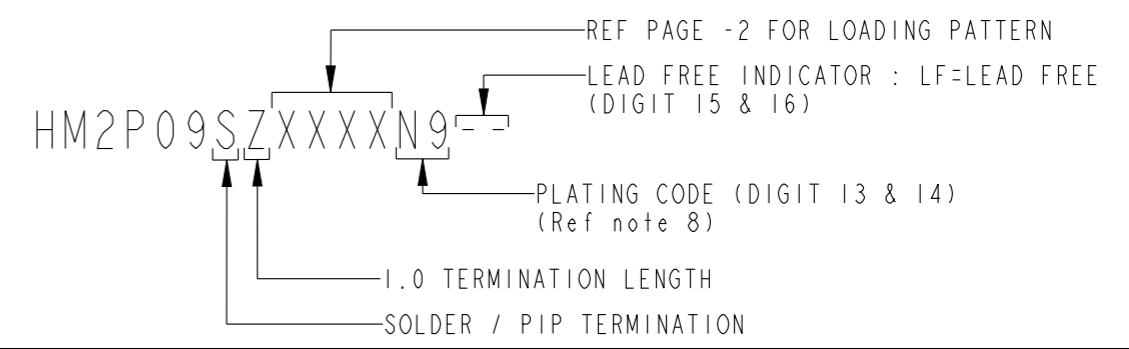
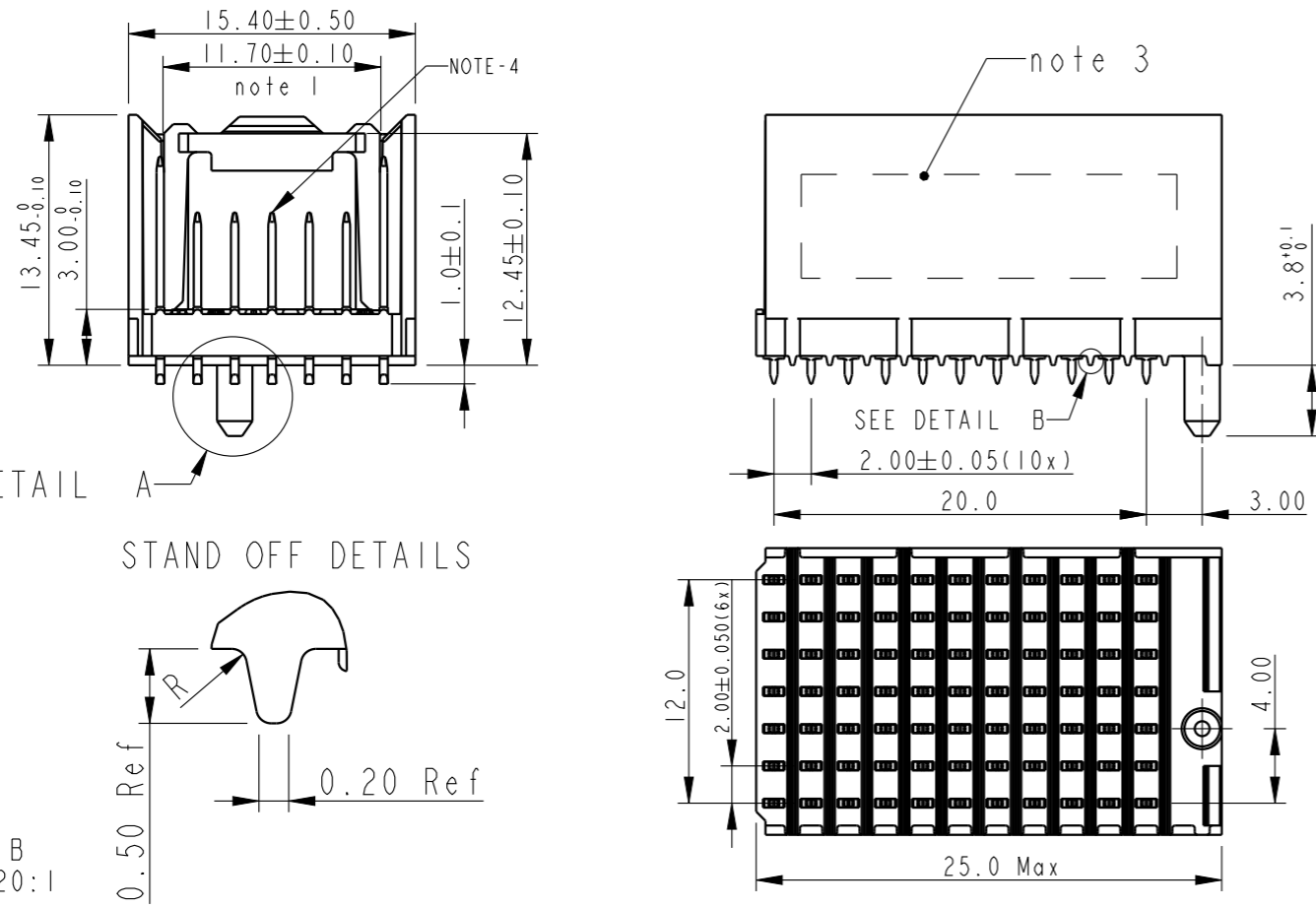
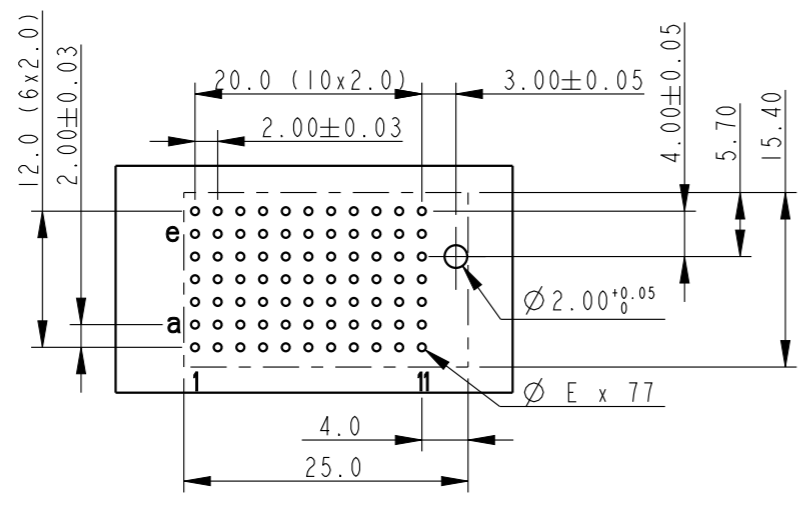


LOADED CONNECTOR ASSEMBLY  
(For Eg. HM2P09SZ5111----



PCB LAYOUT & HOLE DIMENSIONS  
(For Eg. HM2P09SZ5111----



- NOTES :
- MEASURED AT THE BOTTOM
  - MATERIAL CONTACT : PHOSPHOR BRONZE  
HOUSING : HIGH TEMPERATURE POLYMER - BLACK
  - CONNECTOR PRINTED WITH P/N AND DATE CODE
  - FOR ACTUAL CONTACT LOADING,SEE LOADING PATTERN MATING SIDE
  - THE SOLDER CONTENT IN THE PASTE SHOULD BE SUFFICIENT TYPICALLY 50% VOLUME PERCENTAGE. THE SCREEN PRINTING PROCESS (ANGLE,SPEED,PRESSURE ETC) MUST BE OPTIMISED SO THAT ENOUGH SOLDER IS AVAILABLE.(PASTE THICKNESS = 0.15MM)
  - THE PRODUCT (LF) MEETS EUROPEAN UNION DIRECTIVES AND OTHER COUNTRY REGULATIONS AS DESCRIBED IN GS-22-008
  - THIS PRODUCT WITHSTANDS 260°C FOR 10 SECS FOR PIN IN PASTE APPLICATION
  - PLATING DETAILS:  
TERMINATION SIDE : Sn (MATT FINISH)  
CONTACT SIDE : N9 (IEC PERFORMANCE LEVEL 2 )
  - MISSING INFORMATION & DIMENSIONS PER IEC 61076-4-101

Dim	Finished Hole Dia	Cu Thickness	Sn Thickness	Drilled Hole Dia
E	0.65 - 0.80	0.025 - 0.050	0.008 - 0.012	0.72 - 0.92

rev	ecn no	dr	date
A	106-0208	AB	2007-09-28
B	111-0126	AB	2011-06-21
-	-	-	-
-	-	-	-
-	-	-	-

www.fciconnect.com

surface	-	tolerance std	ISO 1302	ISO 406	ISO 1101	projection	mm
TOLERANCES UNLESS OTHERWISE SPECIFIED							
ANGULAR		0.X	±0.2	size	A3		
LINEAR		0.XX	±0.1	ECN	-		
0°	±1°	0.XXX	±0.05	REL Level	RELEASED		

Dr Alex Babu 2006-12-14  
Eng Alex Babu 2011-06-21  
Chr -  
Appr Biju K Paul 2011-06-21

Product family MILLIPACS

FCi  
MILLIPACS TYPE-C STR HDR  
(PIP VERSION)  
catalog no HM2P09SZ5111----

dwg no BSC203204003  
Rev. B

Product - Customer Drw sheet 1 of 3

# LOADING PATTERN MATING SIDE

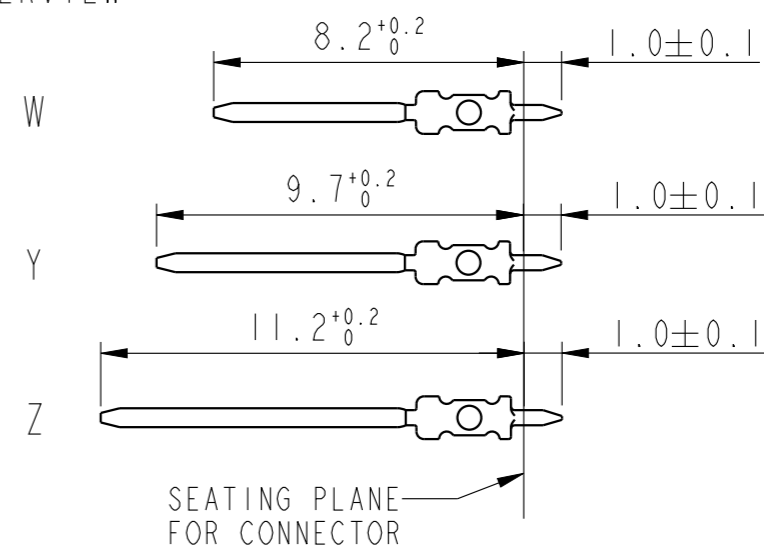
Cat No : HM2P09SZ5111----

f	Z	Z	Z	Z	Z	Z	Z	Z	Z	Z	Z
e	W	W	W	W	W	W	W	W	W	W	W
d	W	W	W	W	W	W	W	W	W	W	W
c	W	W	W	W	W	W	W	W	W	W	W
b	W	W	W	W	W	W	W	W	W	W	W
a	W	W	W	W	W	W	W	W	W	W	W
z	Z	Z	Z	Z	Z	Z	Z	Z	Z	Z	Z
ROWS	1	2	3	4	5	6	7	8	9	10	11
POS											

Cat No : HM2P09SZ5110----

f	0	0	0	0	0	0	0	0	0	0	0
e	W	W	W	W	W	W	W	W	W	W	W
d	W	W	W	W	W	W	W	W	W	W	W
c	W	W	W	W	W	W	W	W	W	W	W
b	W	W	W	W	W	W	W	W	W	W	W
a	W	W	W	W	W	W	W	W	W	W	W
z	0	0	0	0	0	0	0	0	0	0	0
ROWS	1	2	3	4	5	6	7	8	9	10	11
POS											

## CONTACT OVERVIEW



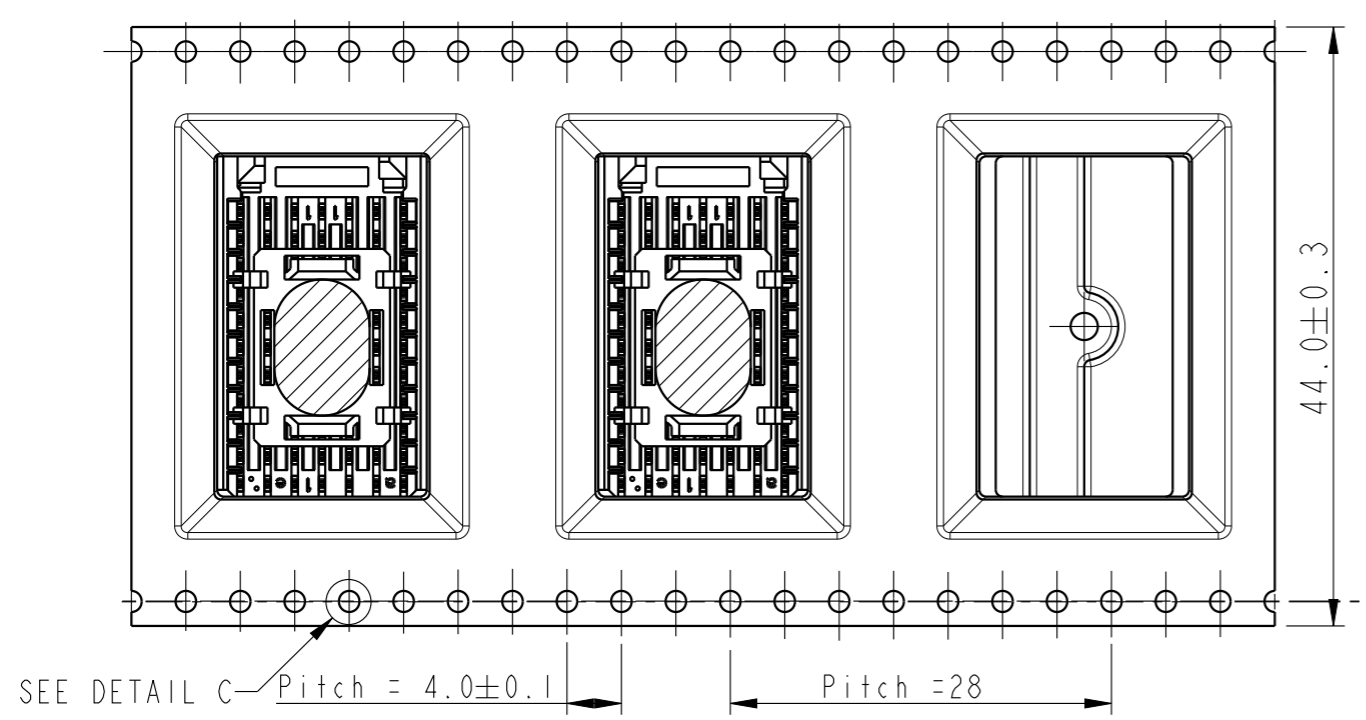
www.fci.com		surface - ✓ ISO 1302	tolerance std ISO 406 ISO 1101	projection ⊕	mm ↔
TOLERANCES UNLESS OTHERWISE SPECIFIED					
Dr	Alex Babu	2006-12-14	ANGULAR	0.X	±0.2
Eng	Alex Babu	2011-06-21	LINEAR	0.XX	±0.1
Chr	-	-	0° ±1°	0.XXX	±0.05
Appr	Biju K Paul	2011-06-21	Product family	MILLIPACS	Spec ref RELEASED
			MILLIPACS TYPE-C STR HDR (PIP VERSION)		Rev. B
catalog no			HM2P09SZ5111----		Product - Customer Drw sheet 2 of 3



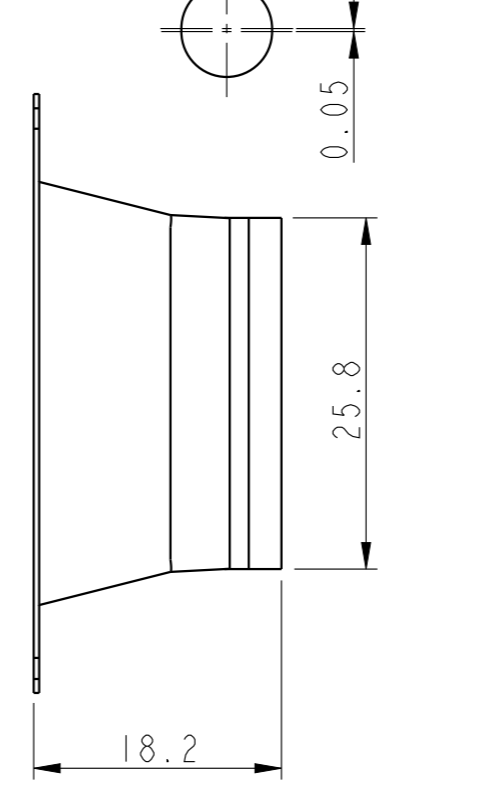
Copyright FCI.

# TAPE ON REEL PACKAGING DETAILS

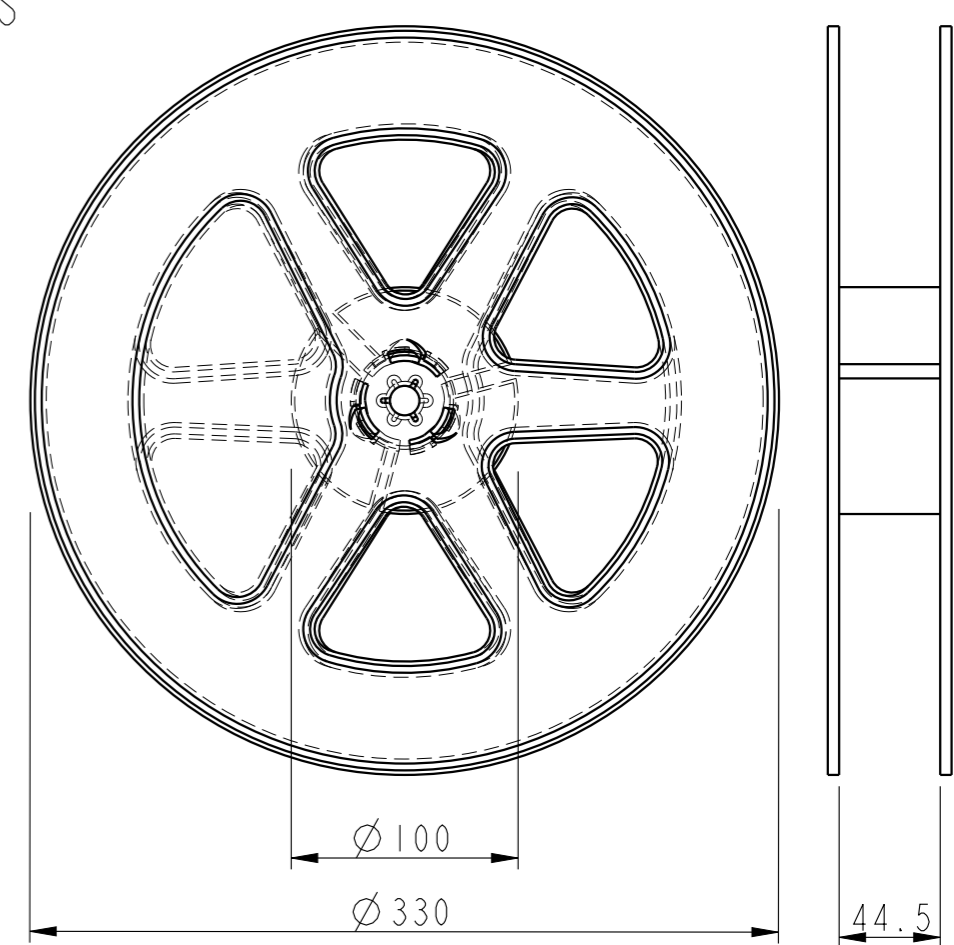
Reel Off Direction



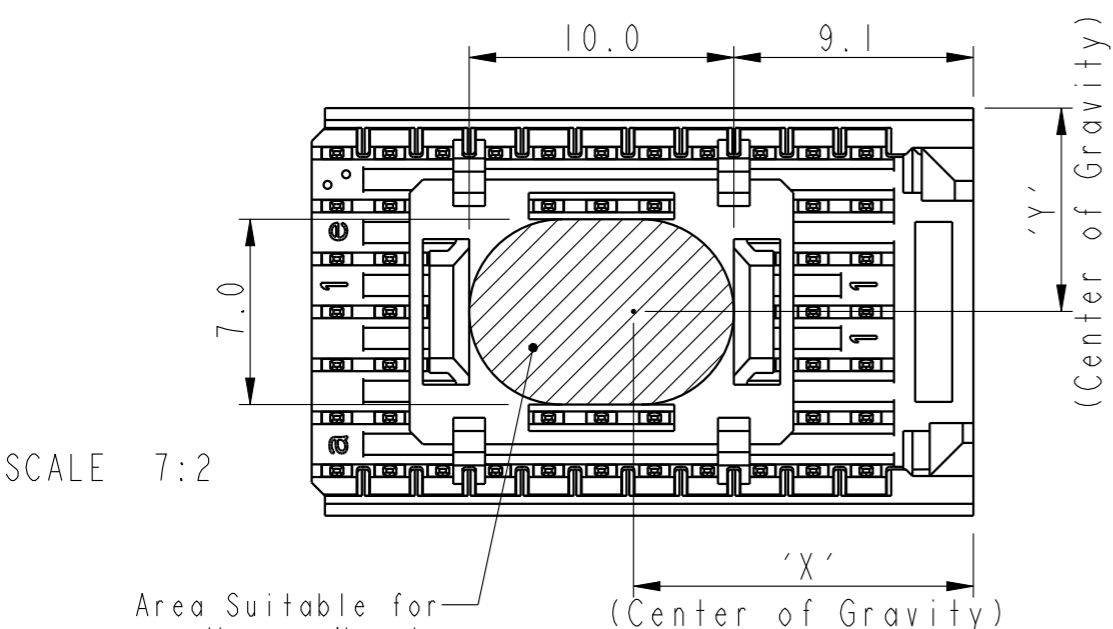
DETAIL C  
SCALE 8:1



SCALE 9:5



SCALE 3:10



SCALE 7:2

NOTES :

- 1 , CONNECTORS PACKED PER REEL : 110 PIECES
- 2 , PACKAGING DETAILS AS PER EIA-481-B
- 3 , PACKING SHOULD BE ANTISTATIC
- 4 , MATERIAL  
CARRIER TAPE : POLYSTYRENE  
COVER TAPE : POLYESTER
- 5 , CONNECTOR CAN BE PICKED UP WITH A MECHANICAL GRIPPER OR A VACUUM NOZZLE DIAMETER UPTO 6 MM

Catalogue No.	Center of Gravity		Weight gms
	'X' mm	'Y' mm	
HM2P09SZ5111----	12.8	7.7	4.2
HM2P09SZ5110----	12.6	7.7	3.7

www.fciconnect.com		surface - <input checked="" type="checkbox"/> tolerance std ISO 1302	<input checked="" type="checkbox"/> ISO 406	<input type="checkbox"/> ISO 1101	projection	mm	
TOLERANCES UNLESS OTHERWISE SPECIFIED						size A3	Scale 2:1
Dr	Alex Babu	2006-12-14	ANGULAR	LINEAR	0.X ±0.2		
Eng	Alex Babu	2011-06-21	0° ±1°		0.XX ±0.1		
Chr	-	-			0.XXX ±0.05		
Appr	Biju K Paul	2011-06-21	Product family	MILLIPACS	Spec ref	RELEASED	
		Title		MILLIPACS TYPE-C STR HDR	dwg no		Rev.
				(PIP VERSION)	BSC203204003		B
		catalog no		HM2P09SZ5111----	Product - Customer Drw		sheet 3 of 3



Copyright FCI.