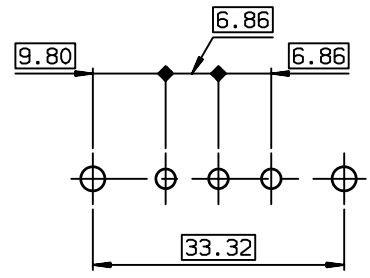
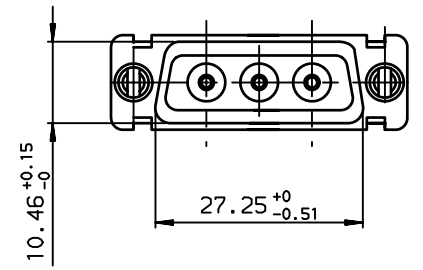
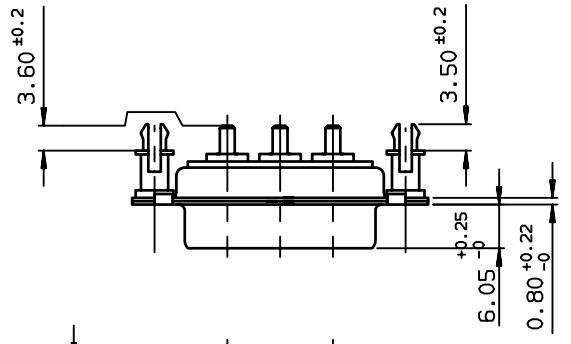


LAYOUT DIMENSIONS (after plating)
CONNECTOR SIDE VIEW



TIN-LEAD PART NUMBER

| | |
|---------------|------------|
| DA03W3S300G30 | UNC 4.40 |
| DAL3W3S300G30 | M3 |
| PART NUMBER | Threaded A |



GENERAL CHARACTERISTICS
SEE DRAWING C01-8639-0001

European Views

| rev | ecn no | dr | date |
|-----|-----------|-----|------------|
| C | - | BAR | 2003/10/29 |
| D | LS05-001 | MPE | 2005/03/05 |
| E | LS06-0095 | LGO | 2006/07/21 |
| F | LS07-0061 | MPE | 2007/03/01 |
| - | - | - | - |
| - | - | - | - |
| - | - | - | - |

| | | | | | |
|---|--------|--------------------------------|-----------------------------------|------------------|------------|
| www.fciconnect.com | | surface ISO 1302 ✓ | tolerance std ISO 406 ISO 1101 | projection A3 | mm |
| TOLERANCES UNLESS OTHERWISE SPECIFIED | | | | | |
| Dr | JARRY | 1995/04/27 | ANGULAR | 0.X | ±0.1 |
| Eng | PESSON | 1995/04/27 | LINEAR | 0.XX | ±0.1 |
| Chr | LEGARE | 1995/04/27 | 0.XX' ±2' | 0.XXX | ±0.1 |
| Appr | LEGARE | 1995/04/27 | Product family | D-SUB | Spec ref - |
| title SOCKET CONNECTORS SUB D | | dwg no C01-8639-0578 | | Rev. F | |
| SCREWS + HARPOONS | | CUSTOMER | | sheet 1 of 1 | |