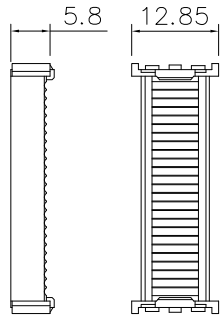
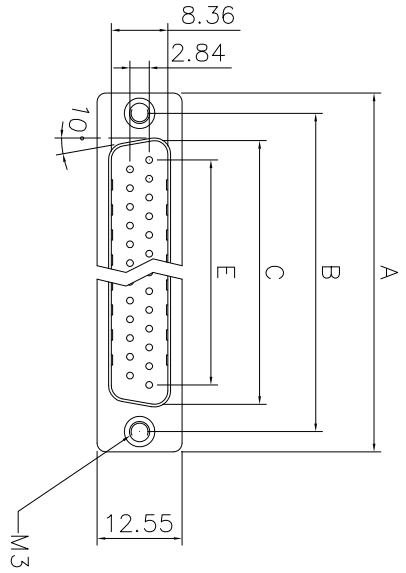
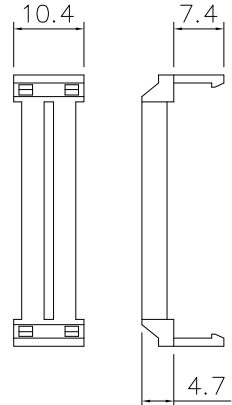
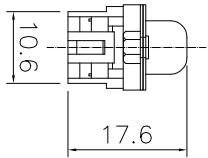
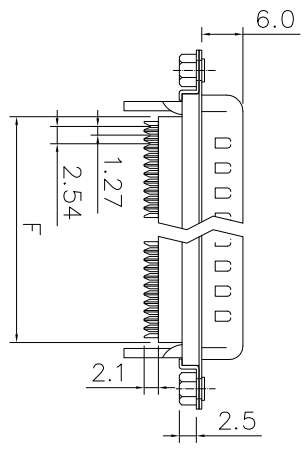


This document is the property of Amphenol Corporation and is delivered on the understanding that it is not to be reproduced, stored in a retrieval system, made or in part, for manufacture or sale by anyone other than Amphenol Corporation without its prior consent, & that no right is granted to disclose or to use any information in this document.

# Customer drawing



Cover



Without Insulator Support

Strain Relief

Dimensions	A	B	C	E	F
Positions					
9	30.81	24.99	16.92	11.08	13.10
15	39.20	33.30	25.25	19.39	20.70
25	53.05	47.04	38.96	33.24	33.68
37	69.40	63.50	55.42	49.86	50.30

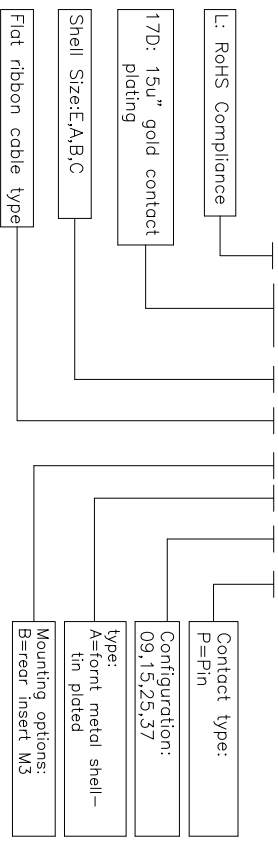
REVISIONS				
S/N	ECN	DESCRIPTION	DATE	APPROVED
1	HK--	First Release Drawing	8/13/13	IP

## D-SUB TECHNICAL DATA

SHELL : Steel, 100u" Tin Over 50u" min nickel over 50u" min Copper  
 BODY : Glass-Filled Thermoplastic PBT,UL94V-0  
 CONTACTS : Copper alloy  
 15u" gold over 50u" nickel on mating area  
 100u" tin over 50u" nickel on solder area  
 Brass, Nickel Plated  
 CLINCH NUT : Voltage rating 250 VAC/RMS  
 ELECTRICAL : Current Rating :3 AMP  
 Withstanding Voltage >1000 VAC RMS  
 Insulation resistance >1000 M Ohms  
 Contact resistance 20 mohms max  
 MARKING : Amphenol-...(Series No.)  
 Commercial reference  
 Manufacturing date

## PRODUCT CODE

### L 117DXFRBAXXP



UNLESS OTHERWISE SPECIFIED		APPROVAL		DATE
TOLERANCES	METRIC	DRAWN	DATE	8/13/13
.X	+/-	0.50		
.XX	+/-	0.30		
.XXX	+/-	0.20		
FRACTIONS	+/-			
ANGLES	+/-	5°		
FOR MATERIALS AND FINISHES SEE REMOTE SHARP EDGES				
DIMENSIONS				
D-SUB				
TINNINGS				
M/M				
DRAWING FILE :				
ANGLE OF PROJECTION				
TITLE				
D-SUB IDC type				
SIZE DRAWING NO				
A4				
SCALE				
NONE				
SHEET 1 OF 1				
REV.				
1				

Amphenol

Amphenol East Asia Limited