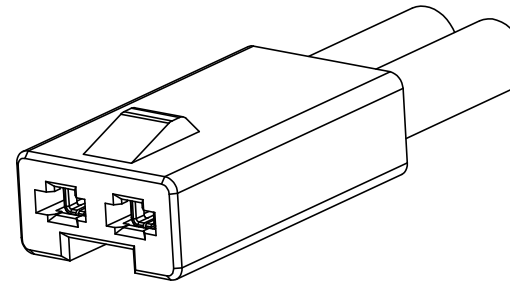
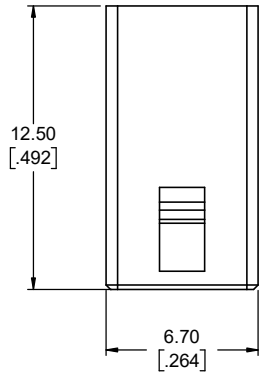
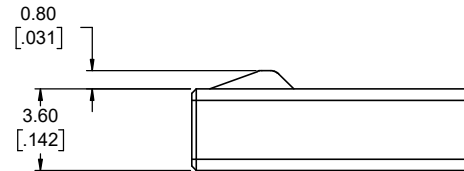
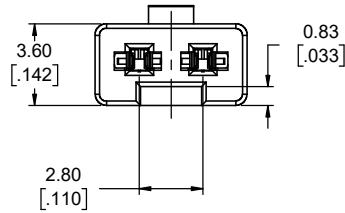




REVISIONS			
REV	DESCRIPTION, ECN, EAR NO.	DATE	APP'D
C	STRIP LENGTH UPDATED	MAR17/21	S.M.
D	DWV UPDATED	APR04/21	S.M.

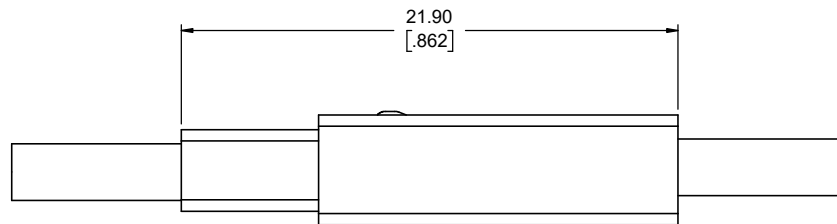


APPLICATION VIEW



NOTES:

- MATERIALS: ALL MATERIALS ARE RoHS COMPLIANT PER EU DIRECTIVE 2011/65/EU & AMENDMENTS
 - HOUSING: ENGINEERING THERMOPLASTIC, UL FLAMMABILITY RATING 94V-0, COLOUR BLACK
 - CONTACTS: COPPER ALLOY, PLATED WITH TIN OVER NICKEL
- ELECTRICAL CHARACTERISTICS
 - CURRENT RATING: 7A (18 AWG) OR 5A (20 AWG) OR 3A (22 AWG) PER CONTACT
 - DIELECTRIC WITHSTANDING VOLTAGE: 1500 VAC
 - INSULATION RESISTANCE: 500 MEGAOHMS
 - OPERATING TEMPERATURE: -40 °C TO +105 °C
- INSERT SOLID OR TIN DIPPED STRANDED WIRE, 3.5±0.25 MM STRIPPED LENGTH



MATED ASSEMBLY WITH FLM-P21-00 WIRES ASSEMBLED

AMPHENOL PART NUMBER: **FLM-S23-XX**

XX = 00 - BLACK HOUSING (STANDARD)
 XX = W0 - WHITE HOUSING
 XX = 01-99 CUSTOM CONFIGURATIONS

UNLESS SPECIFIED OTHERWISE	DRAWN	S.MUGAN	FEB27/20
PRIMARY UNITS MILLIMETERS	CHECKED	A.GREEN	FEB27/20
SECONDARY UNITS INCHES	M.E. APP'D		
REFERENCE IN PARENTHESES	Q.A. APP'D		
GENERAL TOLERANCES	DWG APPR.		
1 DECIMAL PLACE	ENG. REL. NO.		
2 DECIMAL PLACES ±0.10	REF.		
3 DECIMAL PLACES	THIRD ANGLE PROJECTION		
ANGULAR DEGREES	DO NOT SCALE DRAWING		

Amphenol Canada Corp.
 Commercial Products

FLM SERIES PLUG
 WITH WIRE POKE IN CONTACT
 RoHS COMPLIANT

DWG. NO. **P-FLM-S23-XX** REV **D**

CODE ID NO. 03554 DWG SIZE: X SCALE: 5:1 SHEET 1 OF 1