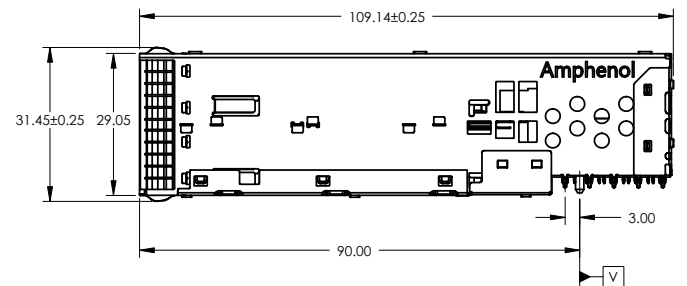
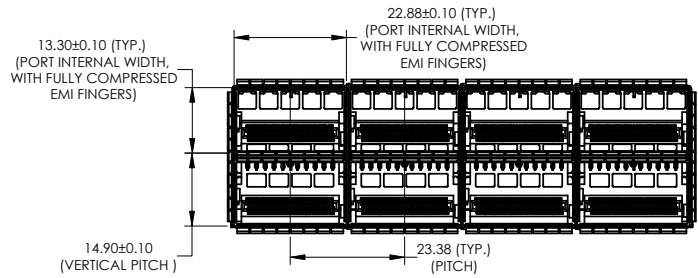
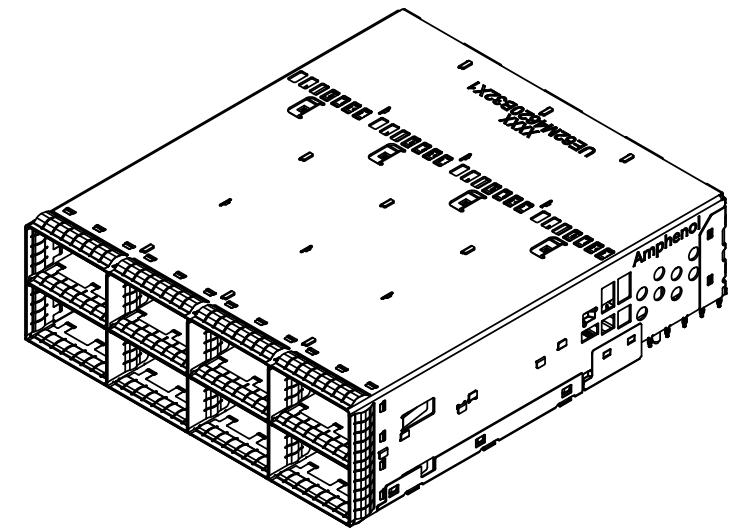
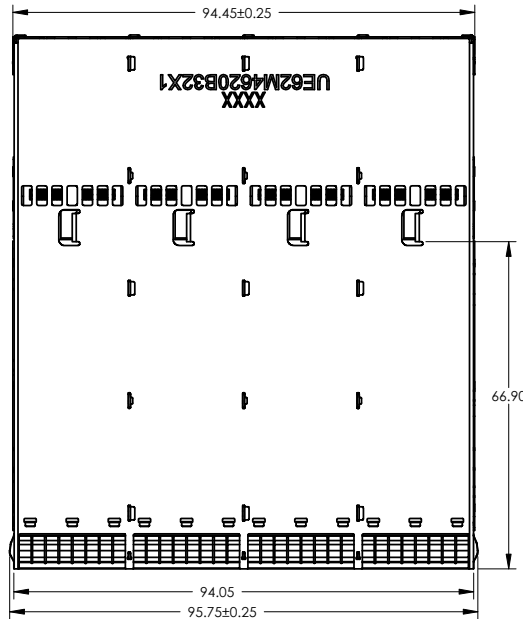


NOTES:

- 1) MATERIAL:
 CAGE - PRESS FIT:
 COPPER ALLOY
 CONNECTOR - PRESS FIT:
 PLASTIC HOUSING:
 LCP, FLAMMABILITY RATING UL94-V0
 CHICKLETS:
 LEADFRAME:
 PHOSPHOR BRONZE
 OVERMOLDING:
 LCP
- 2) PLATING:
 CAGE:
 2.54 µm MIN. NICKEL.
 CHICKLETS LEADFRAME:
 1.27 µm MIN NICKEL OVERALL PLATING
 0.76 µm MIN GOLD ON MATING AREA
 1.20-3.80 µm MATTE TIN ON TERMINATIONS
- 3) PACKAGING: TRAY PACKAGING.
- 4) COMPLIES WITH OSFP MSA
- 5) AMPHENOL PART NUMBER:
UE62-M4620-B32A1

REVISIONS				
REV.	ECN	DESCRIPTION	DATE	APPROVED
A		PROPOSAL	SEP 27, 19	J.SI

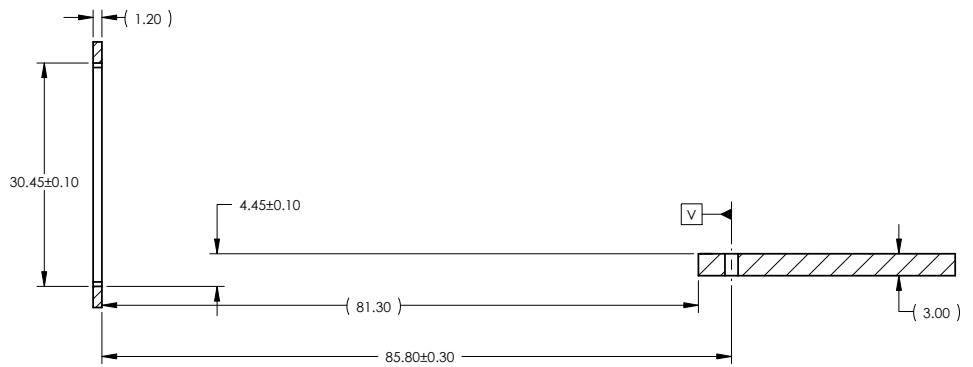
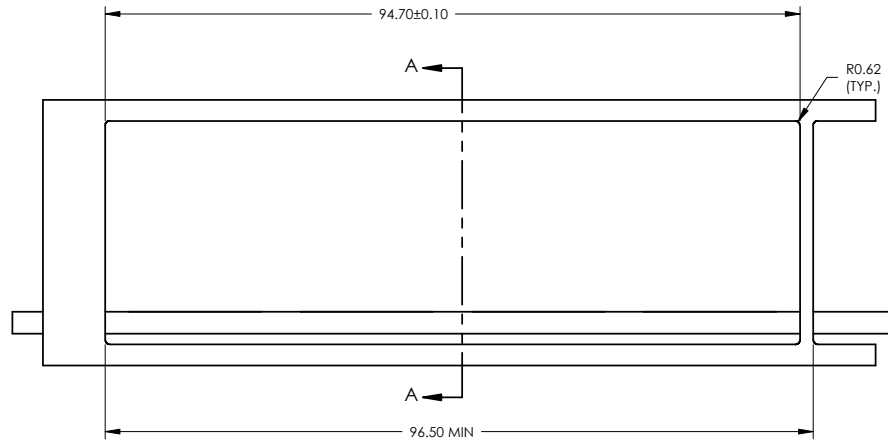


DO NOT SCALE DRAWING

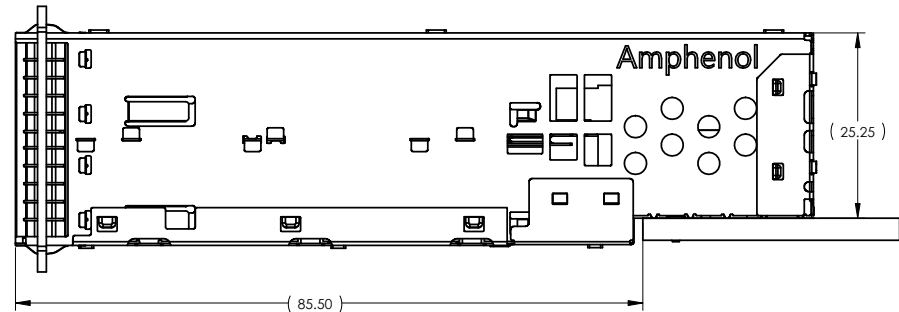
THIS DOCUMENT CONTAINS PROPRIETARY INFORMATION AND SUCH INFORMATION MAY NOT BE DISCLOSED TO OTHERS FOR ANY PURPOSE OR USED FOR MANUFACTURING PURPOSES WITHOUT PERMISSION FROM AMPHENOL CANADA CORP.

<small>UNLESS OTHERWISE SPECIFIED DIMENSIONS ARE IN MILLIMETERS TOLERANCES ARE:</small> DECIMALS ANGLES X.X ± 0.25 ± 0.5° X.XX ± 0.15	APPROVALS	DATE	Amphenol High Speed Interconnects <small>A Division of Amphenol Corp. www.amphenol-highspeed.com</small>		
	DRAWN Mike. H	SEP 27, 19			
	DESIGNED		2X4 OSFP COMBO EMI FINGER IMPROVEMENT		
	CHECKED Chigow.X	SEP 27, 19	SIZE A3	DWG. NO. P-UE62-M4620-B32A1	REV. A
MATERIAL AND FINISH	GA APPD		SCALE 1:1	PROJECT UE62	SHEET 1 OF 3
SEE NOTE 1	E APPD				
REF.	E APPD				
CODE IDENT. NO. 03554	DWG APPD J.SI	SEP 27, 19			

REVISIONS				
REV.	ECN	DESCRIPTION	DATE	APPROVED
A		PROPOSAL	SEP 27, 19	J.SI



SECTION A-A
SCALE 1.5 : 1



DO NOT SCALE DRAWING

THIS DOCUMENT CONTAINS PROPRIETARY INFORMATION AND SUCH INFORMATION MAY NOT BE DISCLOSED TO OTHERS FOR ANY PURPOSE OR USED FOR MANUFACTURING PURPOSES WITHOUT PERMISSION FROM AMPHENOL CANADA CORP.

<small>UNLESS OTHERWISE SPECIFIED DIMENSIONS ARE IN MILLIMETERS TOLERANCES ARE:</small> DECIMALS X.X ± 0.25 ANGLES ± 0.5° MATERIAL AND FINISH SEE NOTE 1 REF. CODE IDENT. NO. 03554	APPROVALS	DATE	Amphenol High Speed Interconnects <small>A Division of Amphenol Corp. www.amphenol-highspeed.com</small> TITLE 2X4 OSFP COMBO EMI FINGER IMPROVEMENT				
	DRAWN Mike. H	SEP 27, 19					
	DESIGNED		CHECKED Chigow.X	SEP 27, 19	SIZE A3	DWG. NO. P-UE62-M4620-B32A	REV. A
	QA APPD		E APPD		SCALE 1:1	PROJECT UE62	SHEET 2 OF 3
DWG APPD J.SI	SEP 27, 19						

8 7 6 5 4 3 2 1

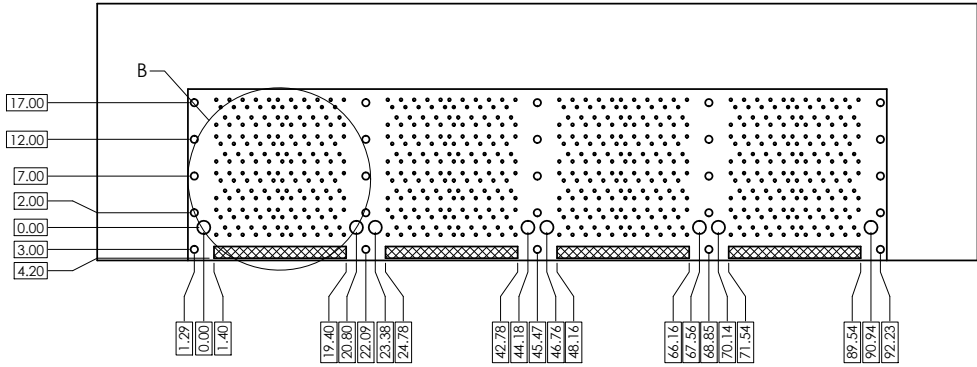
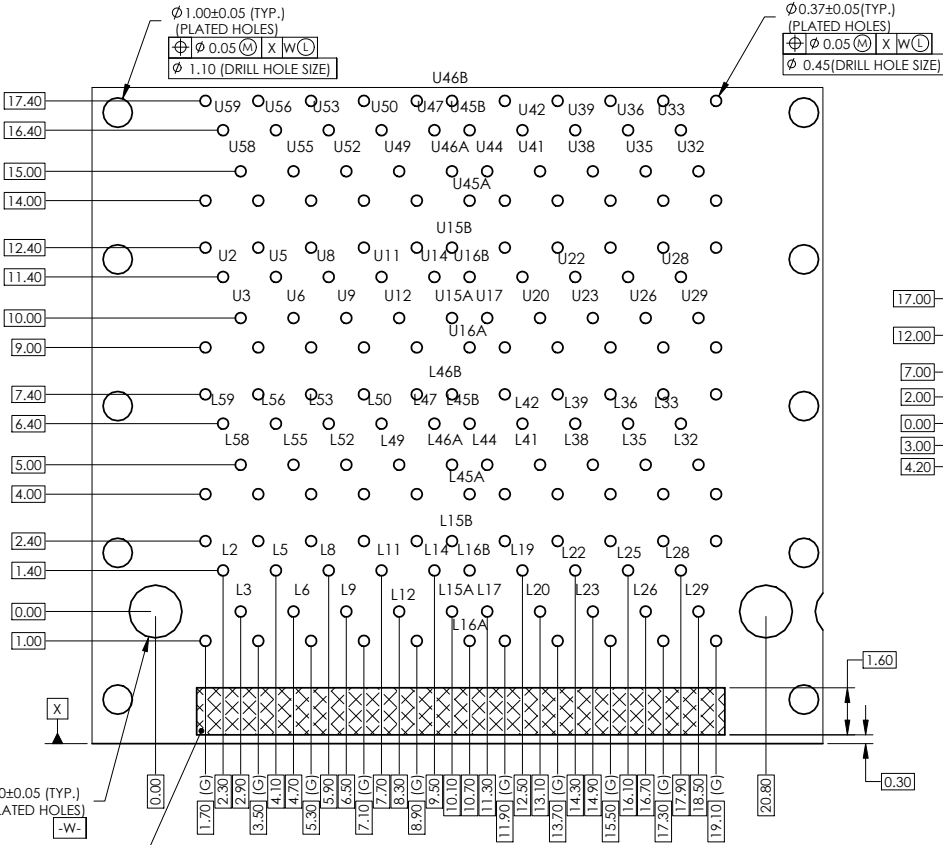
NOTES:

- PIN ASSIGNMENT L=LOW PORT,U=UPPER PORT. SEE PINOUT TABLE FOR DETAILS.
- L/U15A/B, 16A/B, 45A/B AND 46A/B ARE POWER PINS. L15A/B AND L46A/B CONNECTED, L16 AND 45 CONNECTED, U15A/B AND U46A/B CONNECTED, U16 AND U45 CONNECTED.

REVISIONS				
REV.	ECN	DESCRIPTION	DATE	APPROVED
A		PROPOSAL	SEP 27,19	J.SI

D
C
B
A

D
C
B
A



DETAIL B
SCALE 6 : 1

DO NOT SCALE DRAWING

THIS DOCUMENT CONTAINS PROPRIETARY INFORMATION AND SUCH INFORMATION MAY NOT BE DISCLOSED TO OTHERS FOR ANY PURPOSE OR USED FOR MANUFACTURING PURPOSES WITHOUT PERMISSION FROM AMPHENOL CANADA CORP.

UNLESS OTHERWISE SPECIFIED DIMENSIONS ARE IN MILLIMETERS TOLERANCES ARE: DECIMALS X.X ± 0.25 ANGLES ± 0.5° MATERIAL AND FINISH SEE NOTE 1 REF. CODE IDENT. NO. 03554	APPROVALS	DATE	Amphenol High Speed Interconnects A Division of Amphenol Corp. www.amphenol-highspeed.com		
	DRAWN Mike. H	SEP 27,19	TITLE		
	DESIGNED		2X4 OSFP COMBO EMI FINGER IMPROVEMENT		
	CHECKED Chigow.X	SEP 27,19	SIZE A3 SCALE 1:1		
	GA APPD		PROJECT	UE62	SHEET 3 OF 3
	E APPD		DWG. NO.	P-UE62-M4620-B32A	REV. A
	DWG APPD	J.SI	SEP 27,19		

8 7 6 5 4 3 2 1