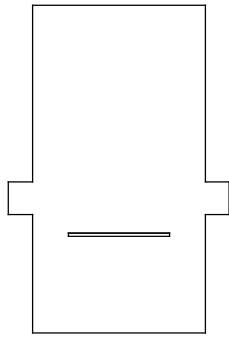
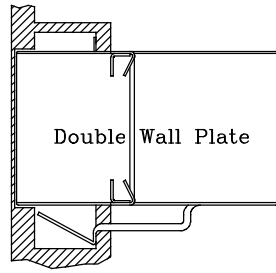


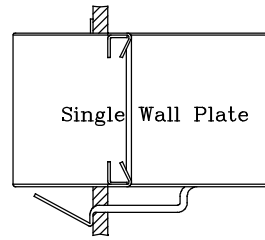
REVISIONS			
REV	DESCRIPTION, ECN, EAR NO.	DATE	APP'D
A	PROPOSAL	AUG 11/15	L.CHAN
B	DELETE LOGO	MAY 17/17	L.CHAN
C	UPDATE DRAWING	JUL 07/17	L.CHAN
D	UPDATE DRAWING	JUL 12/17	L.CHAN
E	ADD COUPLER INTERACTS WITH WALL	JUL 27/17	L.CHAN
F	UPDATE DRAWING	FEB 14/19	L.CHAN



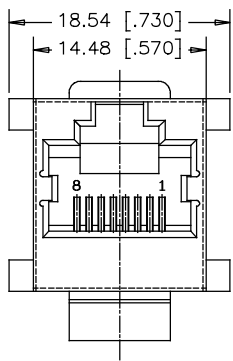
TOP VIEW



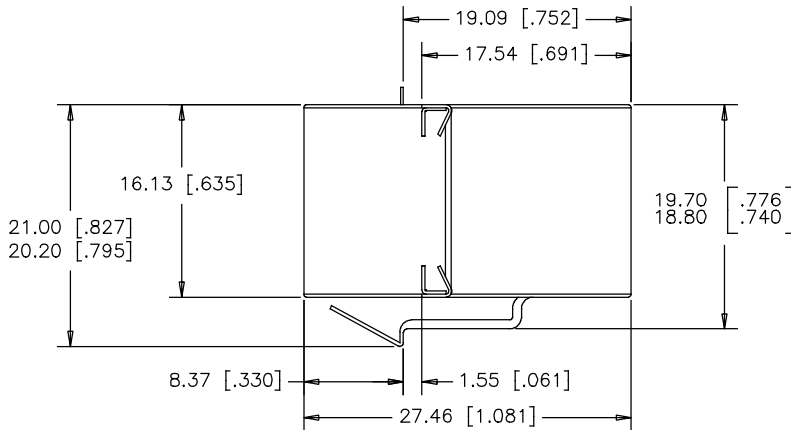
Double Wall Plate



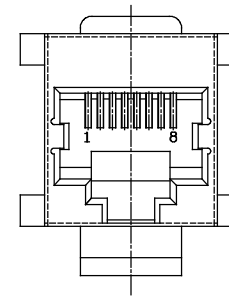
Single Wall Plate



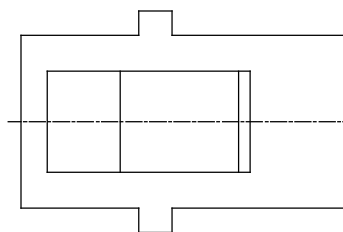
FRONT VIEW



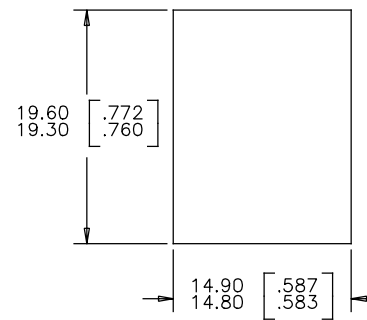
SIDE VIEW



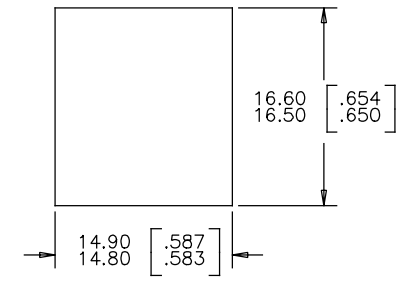
REAR VIEW



BOTTOM VIEW



SINGLE PANEL - LATCH CLEARANCE
PANEL THICKNESS 1.57 [.062]



RECOMMENDED CUTOUT FOR JACK
CLEARANCE WITHOUT LATCH FEATURE

MATERIALS:

HOUSING: ENGINEERING THERMOPLASTIC
FLAMMABILITY RATING UL 94V-0,
COLOUR: BLACK

SHIELD: STAINLESS STEEL.

CONTACT: PHOSPHOR BRONZE.
PLATING: SELECTIVE GOLD PLATING ON MATING SURFACES
SEE AMPHENOL PART NUMBER FOR DETAIL.
50 μ"[1.27 MICRONS]MIN. NICKEL UNDERPLATE.

AMPHENOL PART NUMBER: RJE17-288-1X21

- 1= 6μ" GOLD PLATING
- 2= 15μ" GOLD PLATING
- 3= 30μ" GOLD PLATING
- 4= 50μ" GOLD PLATING

THIS DOCUMENT CONTAINS PROPRIETARY INFORMATION AND SUCH INFORMATION MAY NOT BE DISCLOSED TO OTHERS FOR ANY PURPOSE OR USED FOR MANUFACTURING PURPOSES WITHOUT WRITTEN PERMISSION FROM AMPHENOL CANADA CORP.

UNLESS SPECIFIED OTHERWISE		DRAWN <i>Frank.W</i>	DATE <i>AUG 11/15</i>
PRIMARY UNITS	MILLIMETER	CHECKED <i>LAWRENCE.C</i>	DATE <i>AUG 11/15</i>
SECONDARY	INCH	M.E. APP'D	
REFERENCE IN PARENTHESES		Q.A. APP'D	
GENERAL TOLERANCES		DWG APPR.	
1 DECIMAL PLACE	±0.30	ENG. REL. NO.	
2 DECIMAL PLACES	±0.25	REF.	
3 DECIMAL PLACES	±0.20	THIRD ANGLE PROJECTION	DO NOT SCALE DRAWING
ANGULAR DEGREES	±1.0°		

Amphenol Canada Corp. Commercial Products	
TITLE MODULAR COUPLER JACK, 8 POSITION, 8 CONTACTS, WITH SHIELD, WITH FLANGE (WITH PANEL LATCH)-RoHS COMPLIANT	
DWG. NO.	REV
P-RJE17-288-1X21	F
CODE ID NO. 03554 DWG SIZE: C	SCALE: N/A SHEET 1 OF 1