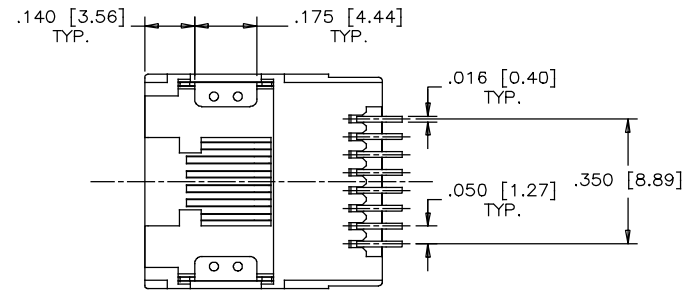
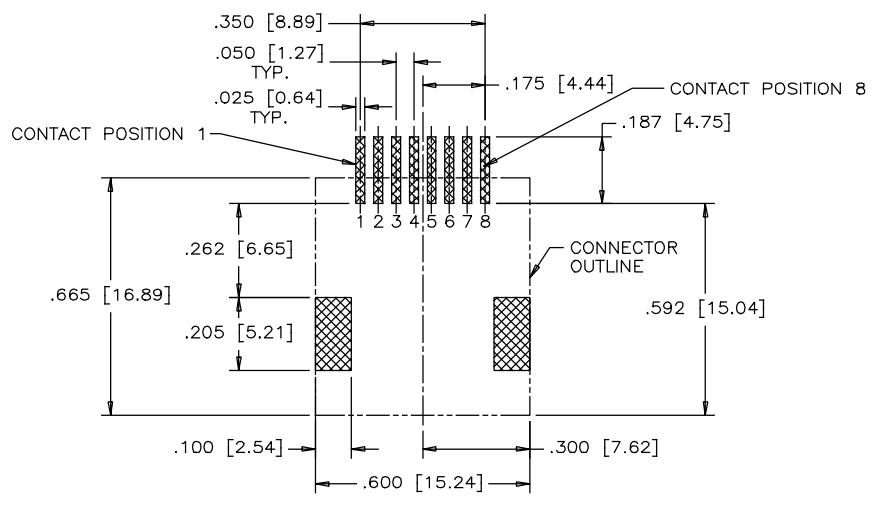
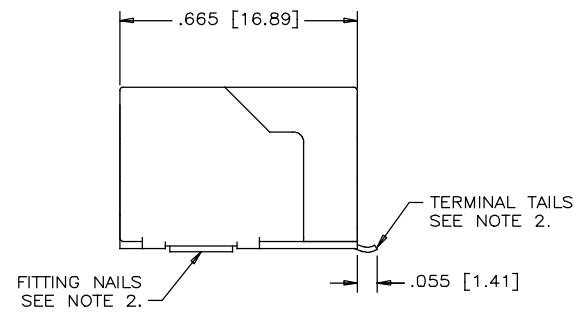
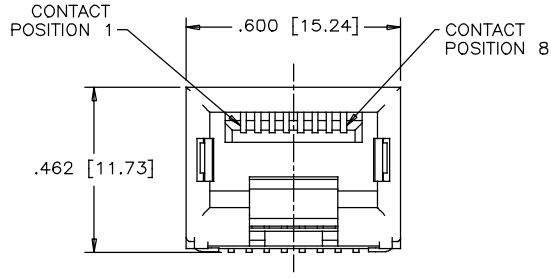


REVISIONS			
REV	DESCRIPTION, ECN, EAR NO.	DATE	APP'D
A	PROPOSAL DRAWING	JULY 20/05	L.CHAN
B	ADD NEW OPTION FOR WHITE HOUSING	AUG 01/17	L.CHAN



RECOMMENDED P.C.B. LAYOUT
(COMPONENT SIDE OF BOARD)

AMPHENOL PART NO.: R J L S E - 4 X 0 X X - 0 1 X

- GOLD PLATING
 - 0 = GOLD FLASH
 - 1 = 15 MICRO" GOLD PLATING
 - 2 = 30 MICRO" GOLD PLATING
 - 3 = 50 MICRO" GOLD PLATING
- NUMBER OF CONTACTS
 - 2 = 2 CONTACTS 4 & 5
 - 4 = 4 CONTACTS 3 TO 6
 - 6 = 6 CONTACTS 2 TO 7
 - 8 = 8 CONTACTS 1 TO 8
- PACKAGING
 - BLANK = TRAY
 - T = TAPE AND REEL
- HOUSING OPTION
 - 0 = WHITE HOUSING
 - 1 = BLACK HOUSING
 - 2 = YELLOW HOUSING
 - 3 = RED HOUSING

NOTES:

1. MATERIALS:
 - HOUSING: HIGH TEMPERATURE RESISTANT NYLON.
FLAMMABILITY RATING UL 94V-0
COLOUR: SEE AMPHENOL PART NUMBER SYSTEM FOR HOUSING OPTIONS
 - CONTACTS: PHOSPHOR BRONZE
PLATING: GOLD PLATING; SEE AMPHENOL PART NUMBER SYSTEM FOR PLATING OPTIONS.
50 MICRO" [1.27 MICRONS] MIN. NICKEL UNDERPLATE.
100 MICRO" [2.54 MICRONS] MIN. MATTE TIN ON CONTACT TAILS.
2. COPLANARITY SPECIFICATION:
WITH THE MODULAR JACK SITTING ON A LEVEL SURFACE, THE MAXIMUM GAP BETWEEN THE LEVEL SURFACE AND ALL TERMINAL TAILS AND BOTH FITTING NAILS IS .004 [0.10].

UNLESS SPECIFIED OTHERWISE	DRAWN PWANG	DATE JULY 20/05	Amphenol Canada Corp. www.amphenolcanada.com
PRIMARY UNITS INCH	CHECKED TERRY	DATE JULY 20/05	
SECONDARY MILLIMETER	M.E. APP'D		TITLE SURFACE MOUNT MODULAR JACK
REFERENCE IN PARENTHESES	Q.A. APP'D		8 POSITION, CONTACT OPTIONS, WITHOUT SHIELD,
GENERAL TOLERANCES	DWG APPR.		WITH GOLD PLATING AND PACKAGING OPTIONS
1 DECIMAL PLACE ±0.025	ENG. REL. NO.		- RoHS COMPLIANT
2 DECIMAL PLACES ±0.020	REF.	EAR # 12798	DWG. NO. P-RJLSE-4X0XX-01X
3 DECIMAL PLACES ±0.015	THIRD ANGLE PROJECTION	DO NOT SCALE DRAWING	CODE ID NO. 03554 DWG SIZE: C SCALE: N/A SHEET 1 OF 1
ANGULAR DEGREES ±1.0°			