

MATERIAL:

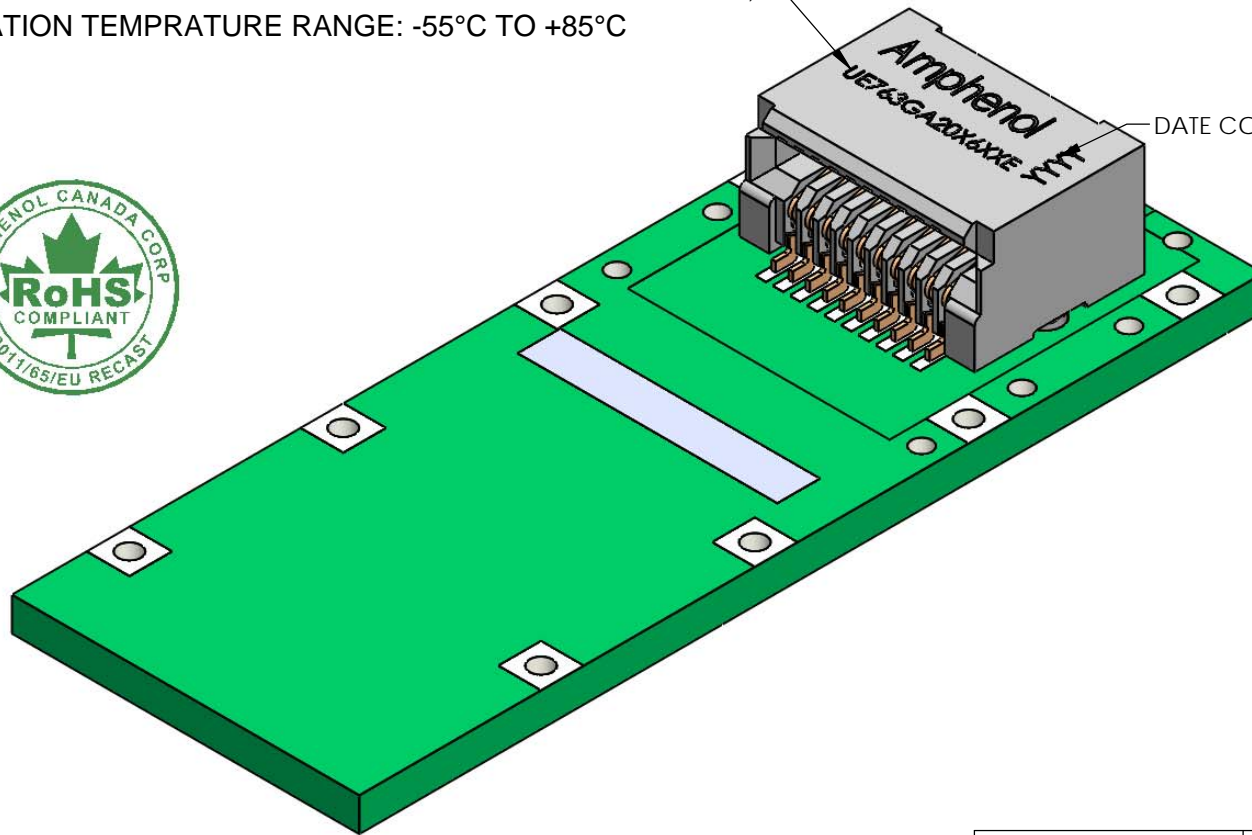
CONNECTOR - SMT
PLASTIC HOUSING:
 LCP, FLAMMABILITY RATING UL94-V0
CONTACT:
 PHOSPHOR BRONZE
 PLATING: SEE AMPHENOL PART NUMBER

PACKAGING: TAPE AND REEL (500 PER)

OPERATION TEMPRATURE RANGE: -55°C TO +85°C



PART NUMBER
 (DOES NOT INCLUDING
 PACKAGING TYPE)



AMPHENOL PART NUMBER CONFIGURATION

UE76 - 3GA20 - X 6 0 0 T

PACKAGING

T = TAPE AND REEL PACKAGING

PLATING

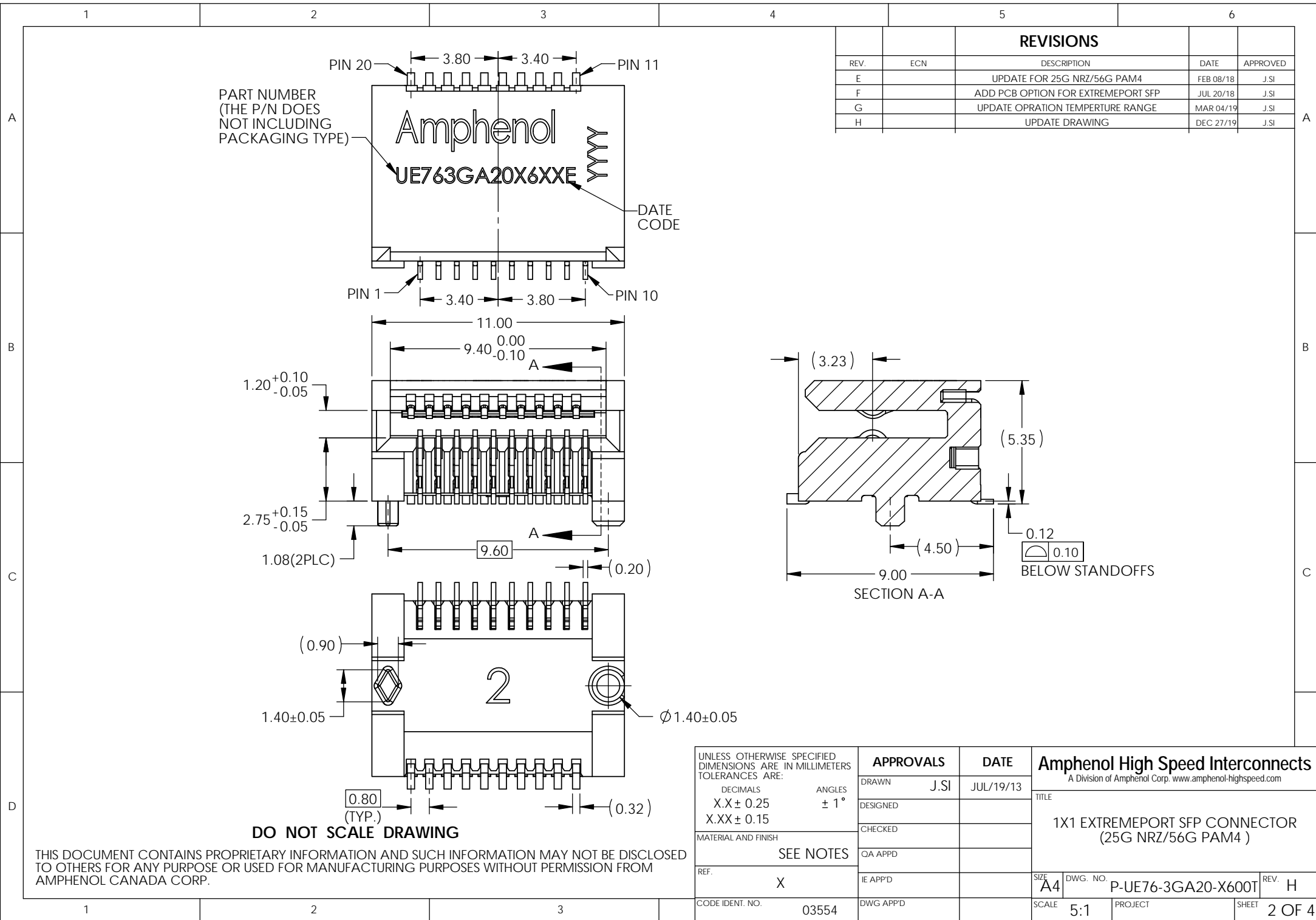
- 2 = 0.76um GOLD AT MATING AREA
GOLD FLASH IN TERMINATION
NICKEL UNDER PLATED OVER ALL.
- 3 = 0.76um GOLD AT MATING AREA
3.0-7.62um MATTE TIN IN TERMINATION
NICKEL UNDER PLATED OVER ALL.
- 5 = 0.38um GOLD AT MATING AREA
GOLD FLASH IN TERMINATION
NICKEL UNDER PLATED OVER ALL.
- 6 = 0.38um GOLD AT MATING AREA
3.0-7.62um MATTE TIN IN TERMINATION
NICKEL UNDER PLATED OVER ALL.

REVISIONS				
REV.	ECN	DESCRIPTION	DATE	APPROVED
E		UPDATE FOR 25G NRZ/56G PAM4	FEB 08/18	J.SI
F		ADD PCB OPTION FOR EXTREMEPORT SFP	JUL 20/18	J.SI
G		UPDATE OPERATION TEMPERATURE RANGE	MAR 04/19	J.SI
H		UPDATE DRAWING	DEC 27/19	J.SI

DO NOT SCALE DRAWING

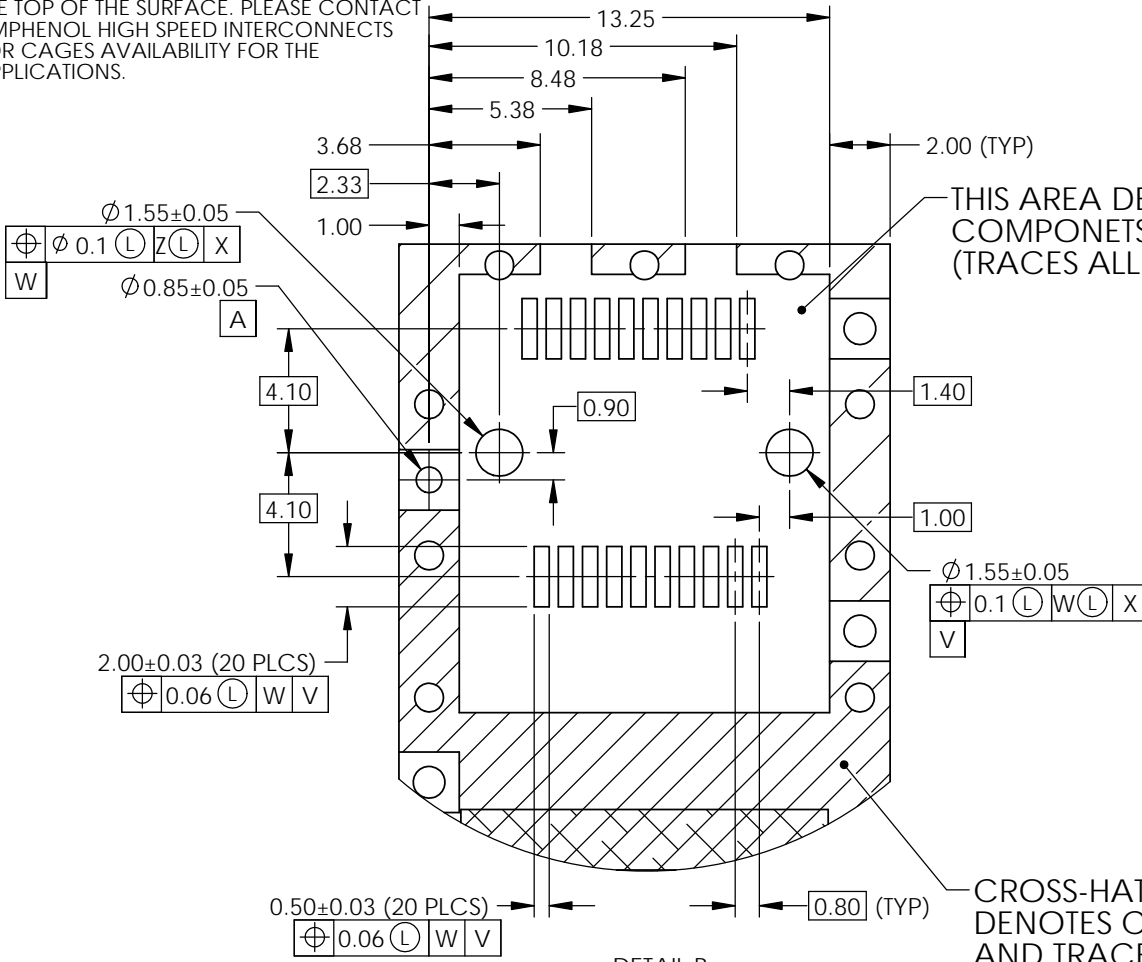
THIS DOCUMENT CONTAINS PROPRIETARY INFORMATION AND SUCH INFORMATION MAY NOT BE DISCLOSED TO OTHERS FOR ANY PURPOSE OR USED FOR MANUFACTURING PURPOSES WITHOUT PERMISSION FROM AMPHENOL CANADA CORP.

UNLESS OTHERWISE SPECIFIED DIMENSIONS ARE IN MILLIMETERS TOLERANCES ARE: DECIMALS ANGLES X.X ± 0.25 ± 1° X.XX ± 0.15	APPROVALS		DATE	Amphenol High Speed Interconnects A Division of Amphenol Corp. www.amphenol-highspeed.com TITLE 1X1 EXTREMEPORT SFP CONNECTOR (25G NRZ/56G PAM4)
	DRAWN	J.SI	JUL/19/13	
	DESIGNED			
	CHECKED			
MATERIAL AND FINISH	SEE NOTES		QA APP'D	
REF.	X	IE APP'D		SIZE A4 DWG. NO. P-UE76-3GA20-X600T REV. H
CODE IDENT. NO.	03554	DWG APP'D		SCALE 4:1 PROJECT SHEET 1 OF 4



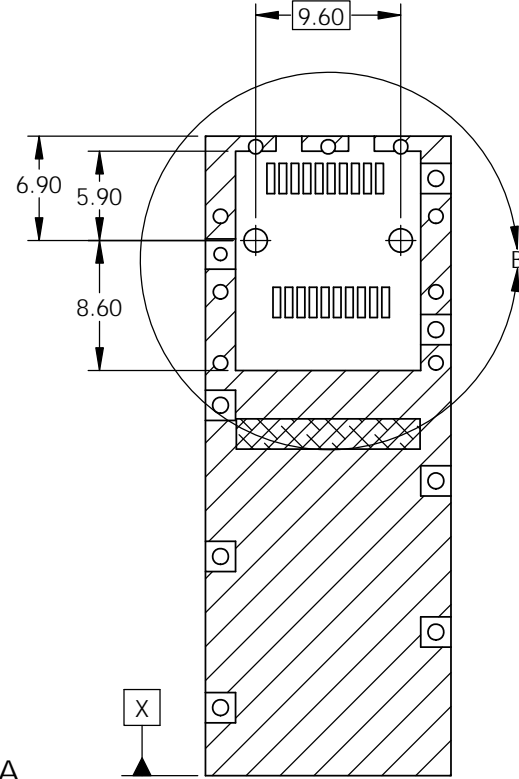
UNLESS OTHERWISE SPECIFIED DIMENSIONS ARE IN MILLIMETERS TOLERANCES ARE:		APPROVALS	DATE	Amphenol High Speed Interconnects A Division of Amphenol Corp. www.amphenol-highspeed.com	
DECIMALS	ANGLES				
X.X ± 0.25	± 1°	DRAWN	J.SI	JUL/19/13	TITLE
X.XX ± 0.15		DESIGNED			1X1 EXTREMEPORT SFP CONNECTOR (25G NRZ/56G PAM4)
MATERIAL AND FINISH		CHECKED			
SEE NOTES		QA APP'D			
REF.	X	IE APP'D			SIZE A4
CODE IDENT. NO.	03554	DWG APP'D			DWG. NO. P-UE76-3GA20-X600T
					REV. H
					SCALE 5:1
					PROJECT
					SHEET 2 OF 4

NOTE:
SOME OF ULTRAPORT CAGES PCB LAYOUT NOT ALLOWED HAVING SIGNAL TRACES ON THE TOP OF THE SURFACE. PLEASE CONTACT AMPHENOL HIGH SPEED INTERCONNECTS FOR CAGES AVAILABILITY FOR THE APPLICATIONS.



DETAIL B
SCALE 4 : 1

REVISIONS				
REV.	ECN	DESCRIPTION	DATE	APPROVED
E		UPDATE FOR 25G NRZ/56G PAM4	FEB 08/18	J.SI
F		ADD PCB OPTION FOR EXTREMEPORT SFP	JUL 20/18	J.SI
G		UPDATE OPERATION TEMPERATURE RANGE	MAR 04/19	J.SI
H		UPDATE DRAWING	DEC 27/19	J.SI



CROSS-HATCHED AREA DENOTES COMPONENT AND TRACE KEEP-OUT (EXCEPT CHASSIS GROUND)

DO NOT SCALE DRAWING

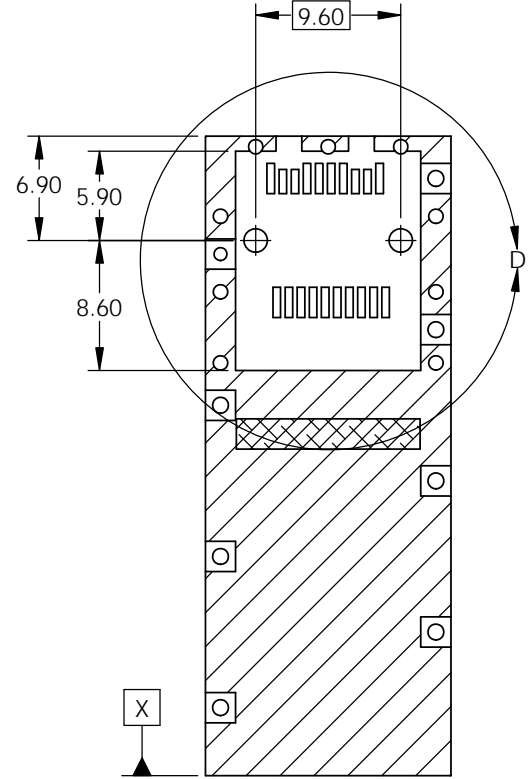
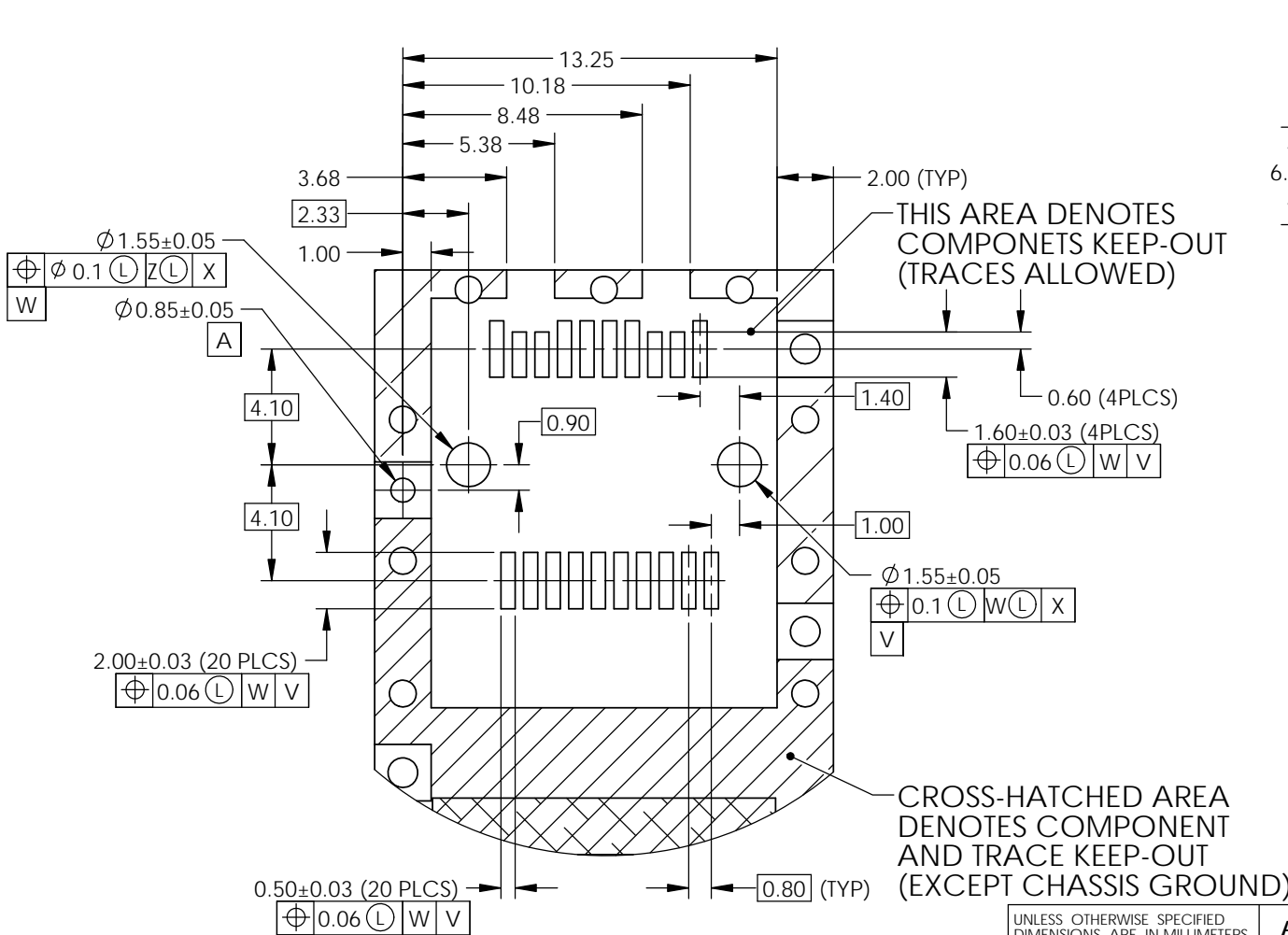
THIS DOCUMENT CONTAINS PROPRIETARY INFORMATION AND SUCH INFORMATION MAY NOT BE DISCLOSED TO OTHERS FOR ANY PURPOSE OR USED FOR MANUFACTURING PURPOSES WITHOUT PERMISSION FROM AMPHENOL CANADA CORP.

UNLESS OTHERWISE SPECIFIED DIMENSIONS ARE IN MILLIMETERS TOLERANCES ARE: DECIMALS ANGLES X.X ± 0.25 ± 1° X.XX ± 0.15	APPROVALS		DATE	Amphenol High Speed Interconnects A Division of Amphenol Corp. www.amphenol-highspeed.com
	DRAWN	J.SI	JUL/19/13	
	DESIGNED			
	CHECKED			
MATERIAL AND FINISH	SEE NOTES		QA APP'D	TITLE
REF.	X	IE APP'D		1X1 EXTREMEPORT SFP CONNECTOR (25G NRZ/56G PAM4)
CODE IDENT. NO.	03554	DWG APP'D		SIZE A4 DWG. NO. P-UE76-3GA20-X600T REV. H
				SCALE 2:1 PROJECT SHEET 3 OF 4

NOTE:

1. SOME OF ULTRAPORT CAGES PCB LAYOUT NOT ALLOWED HAVING SIGNAL TRACES ON THE TOP OF THE SURFACE. PLEASE CONTACT AMPHENOL HIGH SPEED INTERCONNECTS FOR CAGES AVAILABILITY FOR THE APPLICATIONS.
2. FOR SPECIAL CUSTOMER APPLICATION ONLY.
3. THE SPECIAL FOOTPRINTS CAN APPLY TO AMPHENOL UE76-3GA20-X600T (X REPRESENTS VARIOUS PLATING OPTIONS)

REVISIONS				
REV.	ECN	DESCRIPTION	DATE	APPROVED
E		UPDATE FOR 25G NRZ/56G PAM4	FEB 08/18	J.SI
F		ADD PCB OPTION FOR EXTREMEPORT SFP	JUL 20/18	J.SI
G		UPDATE OPERATION TEMPERATURE RANGE	MAR 04/19	J.SI
H		UPDATE DRAWING	DEC 27/19	J.SI



THIS AREA DENOTES COMPONENTS KEEP-OUT (TRACES ALLOWED)

CROSS-HATCHED AREA DENOTES COMPONENT AND TRACE KEEP-OUT (EXCEPT CHASSIS GROUND)

DETAIL D
SCALE 4 : 1

DO NOT SCALE DRAWING

THIS DOCUMENT CONTAINS PROPRIETARY INFORMATION AND SUCH INFORMATION MAY NOT BE DISCLOSED TO OTHERS FOR ANY PURPOSE OR USED FOR MANUFACTURING PURPOSES WITHOUT PERMISSION FROM AMPHENOL CANADA CORP.

UNLESS OTHERWISE SPECIFIED DIMENSIONS ARE IN MILLIMETERS TOLERANCES ARE:		APPROVALS		DATE		Amphenol High Speed Interconnects A Division of Amphenol Corp. www.amphenol-highspeed.com	
DECIMALS	ANGLES	DRAWN	J.SI	JUL/19/13		TITLE	
X.X ± 0.25	± 1°	DESIGNED				1X1 EXTREMEPORT SFP CONNECTOR (25G NRZ/56G PAM4)	
X.XX ± 0.15		CHECKED				SIZE A4 DWG. NO. P-UE76-3GA20-X600T REV. H	
MATERIAL AND FINISH		QA APP'D				SCALE 2:1 PROJECT SHEET 4 OF 4	
SEE NOTES		IE APP'D					
REF.	X	DWG APP'D					
CODE IDENT. NO.	03554						